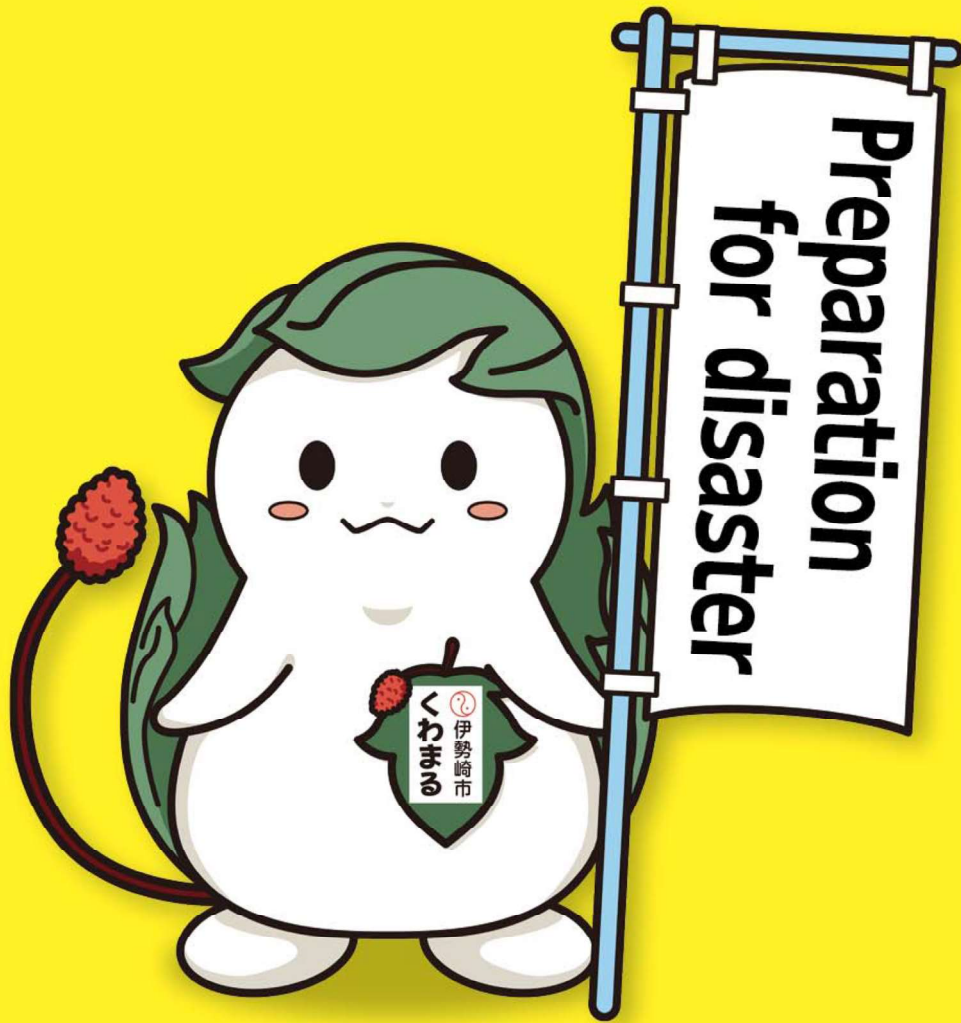


Disaster Preparedness General Map

~ Maintaining our precious life ~



Ise City

Wind and Flood Damage

Hazard Maps

Earthquake

Snow Damage

Disaster Preparedness

About the Disaster Preparedness General Map

In Isesaki city, flood hazard maps showing the extent and depth of flooding and the location of designated evacuation shelters when levees break due to rising rivers, and information on earthquake and snow damage countermeasures, etc. Were combined into one “Disaster Preparedness General Map”, the first edition was published in 2017.

Five years have passed since the publication of that first edition, and during this time the Basic Law on Disaster Countermeasures and the Flood Prevention Law have been revised. The revision of the Basic Disaster Countermeasures Act introduced five levels of alert from 1 to 5, the evacuation advisory was abolished and consolidated into an evacuation order, and the Flood Prevention Act additionally designated flood-prone areas for small and medium-sized rivers, except for designated sections of flood forecast rivers and rivers whose water levels are well known. The “Disaster Preparedness General Map” has been revised.

Use this “Disaster Preparedness General Map” to confirm the disaster risks around your home, the location of designated evacuation centers, evacuation routes, etc. and discuss them carefully with your family and community members.

Also, be sure to keep them in a readily accessible location in case of a disaster.

Contents

About the Disaster Preparedness General Map / Contents

Wind and Flood Damage

Evacuation Information and Actions to Take	P.1
Confirmation of Evacuation Actions	P.2
How to Receive Evacuation Information	P.3
Weather and Disaster Prevention Information	P.4-5
Create My Timeline	P.6-7

Hazard Maps

About the Flood Hazard Maps	P.8
List of Designated Emergency Evacuation Sites · Designated Evacuation Shelters, Etc. ...	P.9
Flooding Potential Area Map by River	P.10
Whole Index Map	P.11
Flood Hazard Map ① - ⑪	P.12-33

Earthquake

Earthquake Measures	P.34-35
Seismic Intensity Distribution Diagram	P.36-37

Snow Damage

Snow Damage Measures	P.38
----------------------------	------

Disaster Preparedness

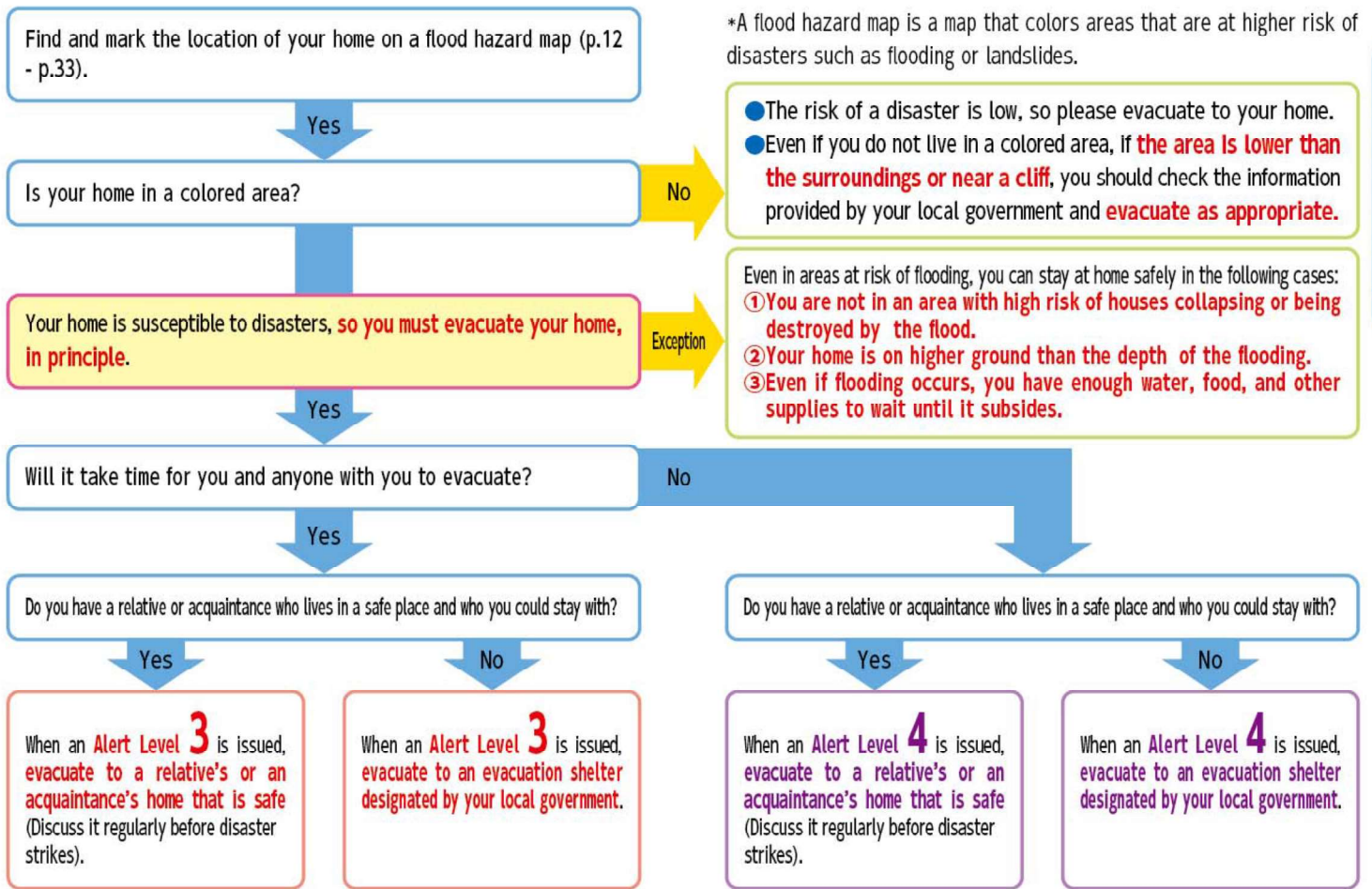
Emergency Supplies · Stockpiles	P.39
Support for People Requiring Special Care	P.40
Local Disaster Prevention Measures	P.41

Disaster Prevention Memo






Contact Information for My Home / Disaster Prevention Related Organizations / Disaster Message Dial · Disaster Message Board ···	Back Cover
--	------------

Evacuation Information and Actions to Take

Flood Evacuation Action Decision Flowchart



Evacuation Information • Disaster Prevention Weather Information (Information Equivalent to Alert Level)

New evacuation information, etc. (Precaution Level)				River water level and rain information (Information equivalent to Alert Level)	
Alert Level	New evacuation information, etc.	Situation	You must do this	Disaster prevention weather information (Information equivalent to Alert Level)	
				Flood information (River)	Landslide information (Rain)
5	Emergency Safety Assurance	Disaster occurrence/ Disaster impending	Life is in dangerous situation immediately ensure safety 	Equivalent to 5 Information on flooding	Heavy Rain (landslide) Emergency Warning
~~<Be sure to evacuate by alert level 4 !>~~					
4	Evacuation Instruction	High risk of weather disaster	Be sure to evacuate everyone from dangerous places. 	Equivalent to 4 Information on potential flood hazards	Landslide Alert Information
3	Evacuation of the Elderly, Etc.	Risk of weather disaster	For elderly people and people with disabilities who take time, evacuate from dangerous places. 	Equivalent to 3 Information to provide a warning on flooding Flood Warning	Heavy Rain Warning
2	Heavy Rain Advisory Flood Advisory	Weather worsening	Check where to evacuate and what to bring in preparation for evacuation 	Equivalent to 2 Information to call attention to flooding	-
1	Probability of Warnings	Risk of Weather worsening	Improve the mental preparation about disaster. 	Equivalent to 1 -	-

*The Alert Level (evacuation information) issued by cities and other organizations and the Alert Level equivalent information issued by the Japan Meteorological Agency, etc. do not necessarily match in timing or target area.

Confirmation of Evacuation Actions

4 Evacuation Actions

Evacuate to an evacuation site designated by your local authority

- Always check your evacuation destination, evacuation route, and whether it can be used during floods.



Evacuate to a friend or relative's home in a safe area

- Talk to them in advance about evacuating during a disaster.

Note : Check the Hazard Map to see whether the area is safe.



Evacuate to a hotel, inn etc. in a safe area

- Normal accommodation charges will apply. Try to make a reservation and /or check availability in advance.

Note : Check the Hazard Map to see whether the area is safe.



Shelter indoors (home evacuation, vertical evacuation)

- Check the Hazard Map to see whether you meet the "3 conditions" to shelter indoors.

Safe on the second floor!
Let's all sleep on the second floor tonight!



イラスト提供：内閣府

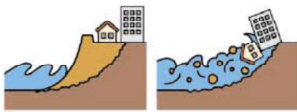
If you meet the "3 conditions" then it may be possible to shelter indoors even during a flood

- ① Your home is not located in an assumed flooding area where houses are likely to collapse



Flooding flow

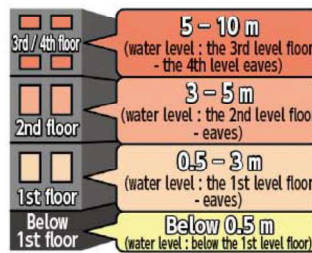
- Wooden houses may collapse due to fast-moving water.



Riverbank erosion

- Your entire house may be washed away as the ground crumbles beneath it.

- ② Your home is higher up than the flooding level



- ③ You can hold out until the water recedes and have sufficient supplies of water/food, etc.

- You may struggle to secure water, food, medicine, or may be unable to use electricity, gas, water, and other utilities.



イラスト提供：内閣府

Going outside during torrential is dangerous, even in a car. If you have no choice but to spend the night in your car, take great care to check your surroundings, etc., to make sure you are not caught in a flood.

Precautions for Evacuation

Depth of water difficult to walk through

- It is difficult to locate gutters and manholes, etc., and there is a risk of stepping out of line.



- If the water flow is fast, there is a risk of tipping over and being swept away.

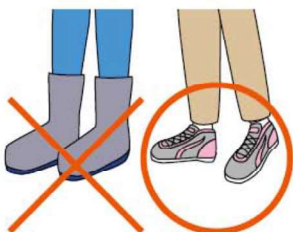


- Even adults may have difficulty walking and may be in danger.
- Children may fall over and be swept away.



Don't wear boots

- Wear athletic shoes or other shoes, as boots are difficult to move in water.



Be careful where you stand

- Your feet will not be visible due to the muddy water.
- When walking, use an umbrella or a long stick as a walking stick to check your footing.



Stay away from rivers and streams

- It is dangerous because of the possibility of rising water and flooding.
- Do not go to check on rivers and waterways.




How to Receive Evacuation Information

Isesaki Information Mail Registration required

- This service provides information on disasters and disaster prevention via e-mail.

How to register Please register by sending a blank email to the following e-mail address from your cell phone or other device.

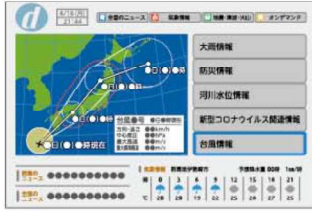
To t-isesaki@sg-p.jp

Scan here ▶ 

for Isesaki Information e-mail

TV Data Broadcasting

- Information can also be collected on TV. By pressing the d button on the remote control while watching a program, the latest weather information, river level information, evacuation information, etc. can be checked on the TV's data broadcasting.



Fax Delivery Service Registration required

- This service delivers information on evacuation by fax.

How to register Fill out the application form and send it to the Safety and Security Division in person or by mail or fax.

*Application forms are available at the Safety and Security Division (Anshinanzenka). It can also be downloaded from the City homepage.

To 〒372-8501 (no address required) Safety and Security Division (Anshinanzenka)
☎26-6123

Yahoo! Disaster Prevention Bulletin App

- Yahoo! Disaster Prevention Bulletin App, evacuation information and other information is distributed to users in designated areas.




Scan here ▶ 

for Yahoo! Disaster Prevention Bulletin App

Emergency Bulletin Mail (Area Mail)

- This service delivers emergency information distributed by the government and the city to cell phones and smartphones within the area. Emergency earthquake alerts, special weather warnings, evacuation information, etc. are delivered regardless of whether or not you have registered for Isesaki Information Mail.

*Setting is required for some models.



SNS X and Facebook

- Disaster and evacuation information will be posted on the City's official account.

[Account]
@isesakicity_lg



▲ Scan here for the City's official X account


[Account]
@isesakicity



▲ Scan here for the City's official Facebook account

City Homepage

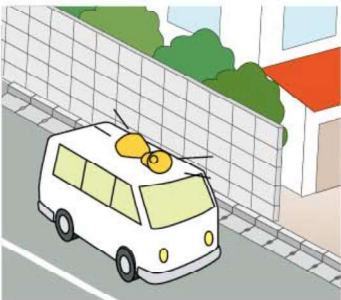
- In addition to evacuation information issued by the city, the site provides comprehensive disaster prevention maps, links to check weather information and river level information, and other information useful for making evacuation decisions. In the event of a disaster, detailed information is provided on an emergency page dedicated to disaster information.

Scan here ▶ 

for the City Homepage

Public Information Vehicle

- The public information vehicle makes the rounds to provide information on evacuation and the opening of evacuation shelters.



VACAN: Information on the opening and congestion of evacuation shelters

- 'VACAN' is a service that allows you to check the opening and congestion status of designated evacuation shelters in real time. The status of shelters is displayed on the map in four levels: 空いています - Vacant やや混雑 - Fairly Crowded 混雑 - Crowded 満 - Full Closed is displayed when no shelter is open.

Scan here for confirmation ▶ 



Weather and Disaster Prevention Information

Information from Japan Meteorological Agency

The following information and other information can be found on the Japan Meteorological Agency Homepage.

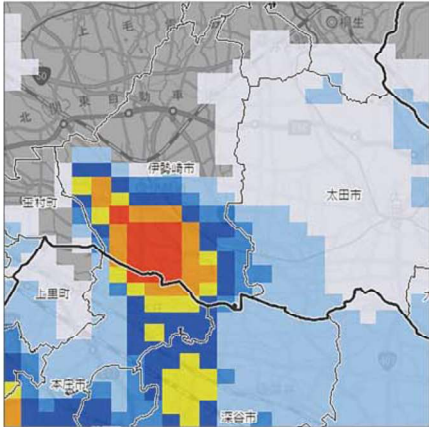
Scan here for the Japan Meteorological Agency HP



Wind and Flood Damage

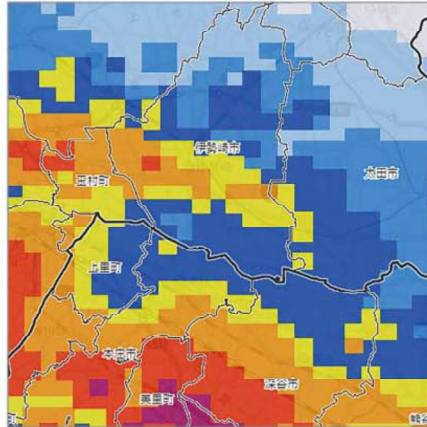
High-resolution Precipitation Nowcasts

- Displays the location and intensity of rainfall expected every 5 minutes for the next hour.



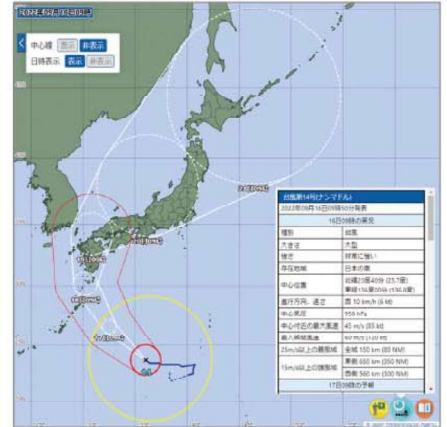
Precipitation Analysis / Forecasts

- Displays hourly forecasts of precipitation for the next 15 hours.



Tropical Cyclone Information

- Displays the current typhoon status, expected course, size, etc.

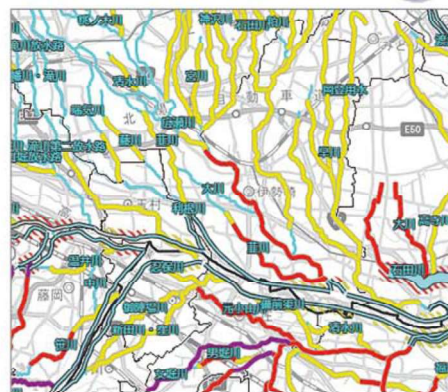


Risk Maps

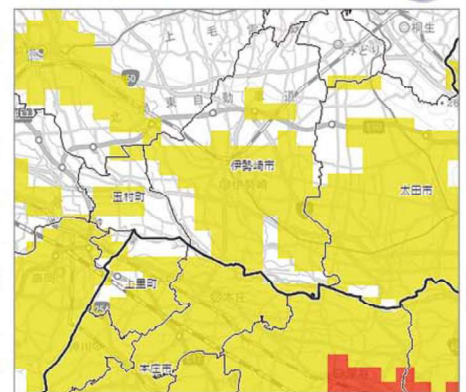
- The map displays color-coded information on the heightened risk of inundation, flooding, and other hazards.



Flood Risk <Real-time flood risk map>



Inundation Risk <Real-time inundation risk map>



画像提供：気象庁

Water Level Information on Rivers

Ministry of Land, Infrastructure, Transport and Tourism • Disaster Information for River

- Water levels and rainfall of major rivers can be checked.



Gunma Prefecture River Disaster Prevention Information "Kawamirugunma"

- Information on water levels and live camera images of rivers set up by Gunma Prefecture and the Ministry of Land, Infrastructure, Transport and Tourism can be checked.



Scan here for Disaster Prevention Information for River HP



Scan here for "Kawamirugunma" HP



Weather Information

Criteria for issuing Special warnings · Warnings · Advisory, etc.

Maebashi District Meteorological Observatory (as of May 26, 2022)

Heavy Rain Emergency Warning	Typhoons and torrential rains are expected to cause heavy rainfall that occurs only once every several decades.
Storm Emergency Warning	When storms are expected to occur due to a typhoon that occurs once every few decades or a similar extratropical cyclone.
Heavy Rain (inundation) Warning	Surface rainfall index benchmark : 21
Flood Warning	Refer to the Japan Meteorological Agency homepage
Storm Warning	Average wind speed 18 m/s
Snowstorm Warning	Average wind speed 18 m/s with snow
Heavy Snow Warning	12-hour snowfall depth : 10 cm
Heavy Rain Advisory	Surface rainfall index standard : 11 Soil rainfall index standard : 100
Flood Advisory	Refer to the Japan Meteorological Agency homepage.
Gale Advisory	Average wind speed 13 m/s
Gale and Snow Advisory	Average wind speed 13 m/s with snow
Heavy Snow Advisory	12-hour snowfall depth : 5 cm
Record-Breaking Short-time Heavy Rainfall Information	Rainfall of 100 mm per hour
Weather Information on significant Heavy Rainfall	When very heavy rain continues to fall in the same location due to Linear Precipitation Zones

- Please refer to the Japan Meteorological Agency HP for information on the criteria for issuing flood warnings and advisories.

Scan here for the Japan Meteorological Agency "List of Standards for Issuing Flood Warnings and Advisories (Gunma Prefecture)" HP



Rain intensity

Rain intensity	1-hour rainfall	Situation
Slightly heavy rain	10 mm – 20 mm	Zinging rain
Heavy rain	20 mm – 30 mm	Even with an umbrella, you will get wet.
Torrential rain	30 mm – 50 mm	Roads become like rivers.
Very heavy rainfall	50 mm – 80 mm	Umbrellas become totally useless.
Violent rainfall	More than 80 mm	There is a feeling of pressure that makes it difficult to breathe.

Wind strength

Wind strength	Average wind speed (per second)	Situation
Slightly strong wind	10 m – 15 m	It becomes difficult to walk into the wind. Entire trees and power lines begin to sway.
Strong wind	15 m – 20 m	It becomes difficult to walk into the wind. Signs and tin sheets begin to come off.
Very strong wind	20 m – 30 m	You have to hold on to something to stand. Roof tiles may fly off.
Gale force winds	More than 30 m	Many trees fall over. Trucks in motion overturn.

Typhoon Size

Typhoon size (class)	Wind speed (per second) radius of 15 m or more
Large (big)	500 km or more but less than 800 km
Super large (very large)	800 km or more

Typhoon Strength

Typhoon strength (class)	Maximum wind speed (per second)
Strong	33 m or more but less than 44 m
Very strong	44 m or more but less than 54 m
Severe	54 m or more

- A typhoon is a tropical cyclone whose maximum wind speed (per second) reaches 17.2 m or more.

Linear Precipitation Zones

- A "Linear Precipitation Zones" is a rainfall area with strong precipitation created by developing cumulonimbus clouds that pass or remain in the same location for several hours.
- The length of the rainfall area ranges from 50 km to 300 km, and the width from 20 km to 50 km.
- The mechanism of "Linear Precipitation Zones" is not well understood, and it is difficult to predict their occurrence.

Typical image of a Linear Precipitation Zones

