

# About the Flood Hazard Maps

These Flood Hazard Maps show the locations of the expected flood inundation zones, expected house collapse and other inundation zones, designated emergency evacuation sites and designated evacuation shelters in the city, as published by the Ministry of Land, Infrastructure and Transport, the river administrator, and Gunma Prefecture. The expected scale of heavy rain is as follows.

- Tonegawa.....River basin in Tonegawa · River in basin in Yattajima, quantity of rain for 72 hrs. 491 mm
- Hirosegawa.....River basin in Hirosegawa for 24 hrs. 589 mm · River basin in Tonegawa · River basin in Yattajima upper quantity of rain for 72 hrs. 491 mm
- Hayakawa.....River basin in Hayakawa quantity of river 24 hrs. 670 mm. River basin in Tonegawa · River basin upper in Yattajima quantity of rain for 72 hrs. 491 mm
- Kasukawa.....River basin in Kasukawa quantity of rain for 24 hrs. 666 mm
- Niragawa.....River basin in Niragawa quantity of rain for 24 hrs. 690 mm
- Aratogawa.....River basin in Aratogawa quantity of rain for 24 hrs. 670 mm
- Momonokigawa...River basin in Momonokigawa quantity of rain for 24 hrs. 589 mm
- Karasugawa...River basin in Karasugawa quantity of rain 72 hrs. 579 mm
- Kannagawa....River basin in Karasugawa quantity of rain for 72 hrs. 579 mm
- Koyamagawa...River basin in Koyamagawa quantity of rain for 24 hrs. 636 mm. River basin in Tonegawa · River basin upper in Yattajima quantity of rain for 72 hrs. 491 mm

## Search on the Internet

### Inundation Navi

This is a search system for inundation simulation by location.

- Animation shows the depth of inundation at a specified location.
- The arrival time and duration time of inundation at the specified location can be shown.
- The current river level information from the water level observation point is shown.



Scan here for the Inundation Navi HP



### Gunma Prefecture Flood Inundation Area Map

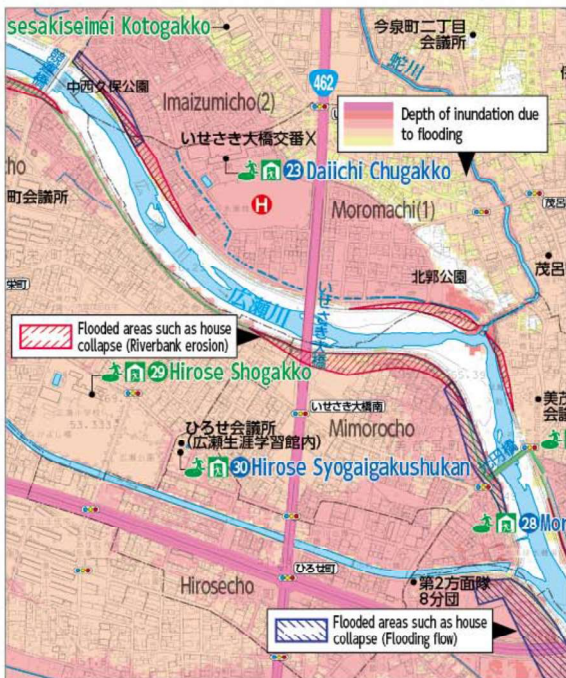
For more information, please refer to “Gunma Prefecture Flood Inundation Assumption Area Map (List)”.



Scan here for the Gunma Prefecture Flood Inundation Projection Area Map HP



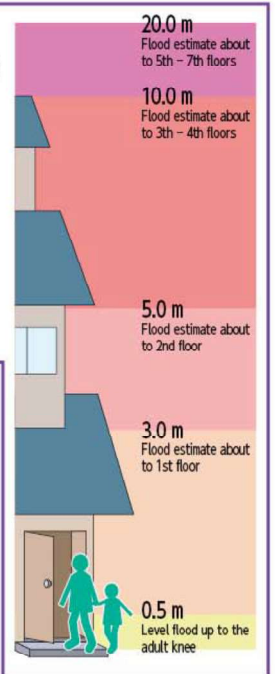
## How to Read Flood Hazard Maps



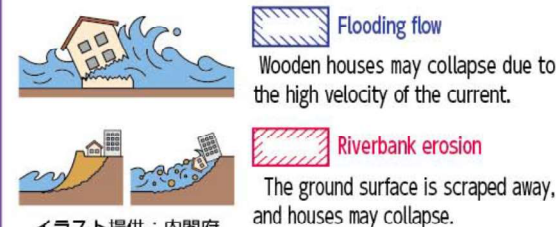
### Potential Flooding Zones

This is the area that is expected to be inundated in the event of a river overflow.  
\*There are no zones between 10.0 m and less than 20.0 m in the city.

Depth of inundation due to flooding	
	10.0 to less than 20.0 m
	5.0 to less than 10.0 m
	3.0 to less than 5.0 m
	0.5 to less than 3.0 m
	0.0 to less than 0.5 m
	No flooding expected



### Flooded areas such as house collapse (Flooding flow) (Riverbank erosion)



イラスト提供：内閣府

## Evacuation facilities opened by the city

### Designated Emergency Evacuation Site

- Keep safe yourself in case of emergency evacuate immediately at the evacuation place.

### Designated Evacuation Shelters

- The victims can stay permanent depend on the limit of staying.

### Welfare Evacuation Shelters

- These facilities are designed to accommodate the elderly, people with disabilities, and others who require special consideration.



Designated Emergency Evacuation Site and Designated Shelters (flood and earthquake)



Designated Emergency Evacuation Site (earthquake only)



Evacuation facilities that allow pets to be brought into the living area



Designated Emergency Evacuation Site and Designated Shelters (earthquakes only)



Welfare Evacuation Shelters

# List of Designated Emergency Evacuation Site · Designated Evacuation Shelters, etc

Designated Emergency Evacuation Site · Designated Evacuation Shelters					
Area	Number	Facility Name	Address	Disaster Warehouse / Coordinated Map	
Kita area	1	Kita Shogakko	Kuruwacho28-24	○ 19-F-3	
	2	Toshokan	Kuruwacho22-21	— 19-E-3	
	3	Daiichi Yochien	Kuruwacho24-26	— 19-F-3	
	4	Kita Kominkan	Heiwacho27-32	○ 19-F-3	
	5	Kitadaini Shogakko	Munetakacho125	— 19-F-2	
	6	Kezoji Koen, Shimin Taiikukan	Tsutsunishicho93	— 15-D-4	
Minami area	7	Isesakikogyo Kotogakko	Chucho3-8	— 19-F-3	
	8	Minami Shogakko	Kamiizumicho310	○ 19-F-4	
	9	Isesakikoyo Kotogakko	Kamiizumicho212	— 19-F-4	
	10	Minami Yochien	Kamiizumicho116	— 19-E-4	
	11	Minami Kominkan	Kamiizumicho619-1	— 19-E-4	
	12	Fukushipuraza	Chucho26-22	○ 19-F-3	
	13	Isesakiseimei Kotogakko	Imaizumicho2chome331-6	— 19-F-4	
Uehasu area	14	Uehasu Yochien	Kamiuekihonmachi2740-2	— 21-D-2	
	15	Uehasu Kominkan	Kamiuekihonmachi2760	○ 21-D-2	
	16	Uehasu Chugakko	Kamiuekihonmachi2152-2	— 21-D-2	
	17	Yotsubagakuen Chutokoikugakko	Kamiuekihonmachi1702-1	— 20-C-2	
	18	Uehasudaini Shogakko	Shimouekicho1203	— 21-D-3	
	19	Bunkakaikan	Showacho3918	— 21-D-2	
	20	Kasurinotsato	Showacho1712-2	— 20-C-2	
	21	Uehasu Shogakko	Kamiuekihonmachi2763	— 21-D-2	
	22	Kyoikukenkyujo	Kashimacho581-1	— 20-C-2	
	Moro Area	23	Daiichi Chugakko	Moromachi1chome24-1	— 19-F-4
24		Isesaki Kotogakko	MinamiSengicho5239-1	— 27-D-2	
25		Isesaki Tokubetsusushienagakko	Kasukawacho1003	— 21-D-4	
26		Moro Shogakko	Moromachi2chome2169-1	— 26-C-1	
27		Moro Yochien	Moromachi2chome2139-1	— 27-D-1	
28		Moro Kominkan	Mimorocho3032-7	○ 26-C-2	
29		Hirose Shogakko	Shineicho4074-1	— 25-F-1	
30		Hirose Syogaigakusyukan	Hirosecho4080-5	— 25-F-1	
31		Sogokyoikusenta	Imaizumicho1chome233-2	— 20-C-4	
32		Jidosenta	Kasukawacho1609	— 21-D-4	
33		Rinpokan	Sannocho1422-1	— 26-C-2	
Misato Area		34	Misato Kominkan	Hashiemachi1029	○ 14-C-4
		35	Misato Shogakko	Hashiemachi1620	— 14-C-4
	36	Misato Yochien	Hashiemachi1067	— 14-C-4	
	37	Daisan Chugakko	Hashiemachi1903-1	— 14-C-4	
	38	Isesakishogyo Kotogakko	Hashiemachi1116	— 14-B-4	
	39	Seishonenikuseisenta	Hashiemachi2237-6	— 14-C-4	
	Miyago Area	40	Miyago Chugakko	Tanakajimamachi1065	— 18-C-3
41		Miyago Yochien	Tanakajimamachi1486-8	— 18-C-3	
42		Miyago Kominkan	Tanakajimamachi1102	○ 18-C-3	
43		Miyago Shogakko	Tanakajimamachi1475-4	— 18-C-3	
44		Miyagodaini Shogakko	Tsunatorimachi3069-1	○ 19-D-3	
45		Seibu Koen *1	Tsunatorihonmachi1	— 19-D-2	
Nawa Area	46	Nawa Kominkan	Horiguchimachi492	○ 25-E-2	
	47	Nawa Shogakko	Horiguchimachi502-1	— 25-E-3	
	48	Nawa Yochien	Horiguchimachi260	— 25-E-3	
	49	Daini Chugakko	Horiguchimachi237-1	— 25-E-3	
	50	Jobu Daigaku	Toyazukamachi634-1	— 25-D-4	
	51	Isesakishiminomori Koen *1	Sannocho2663	— 25-F-2	
	52	Tokyofukushi Daigaku	Sannocho2020-1	— 25-F-3	
	53	Seisorisaikurusenta21	Shibamachi954	— 24-C-2	
	Toyooku Area	54	Bando Shogakko	Yogecho422	— 25-E-4
55		Daiyon Chugakko	Gedojicho26	— 26-C-4	
56		Kyutoyouke Yochien	Gedojicho163	— 26-C-4	
57		Toyoke Kominkan	Mamizukamachi1296	○ 27-D-4	
58		Toyoke Shogakko	Mamizukamachi1130	— 27-D-4	
59		Shiminpuraza	Tomizukacho220-13	○ 25-E-4	
60		Kodomonomori Koen Isesaki	Mamizukamachi1808-1	— 27-D-4	

Designated Emergency Evacuation Site · Designated Evacuation Shelters				
Area	Number	Facility Name	Address	Disaster Warehouse / Coordinated Map
Akabori Area	61	Akabori Kominkan	Nishikubocho2chome81	— 12-C-4
	62	Akaborihokenfukushisenta	Nishikubocho2chome123-1	○ 12-C-4
	63	Akabori Jidokan	Nishikubocho2chome105	— 12-C-4
	64	Akabori Yochien	Nishikubocho2chome100	— 12-C-4
	65	Akabori Shogakko	Nishikubocho1chome72	○ 12-C-4
	66	Akaboriminami Shogakko	Horishitacho264-1	○ 15-E-2
	67	Akabori Chugakko	Nishikubocho2chome329-1	○ 16-B-1
	68	Akaborihigashi Shogakko	Kobayashicho1chome260-2	○ 13-D-3
	69	Akaboriminami Jidokan	Horishitacho276	— 15-E-2
	70	Akaboriasahi Jidokan	Kobayashicho1chome1348-1	— 13-E-3
Azuma Area	71	Akabori Taiikukan	Nishikubocho2chome81	— 12-C-4
	72	Azuma Shogakko	Azumacho2770	— 16-C-4
	73	Azuma Chugakko	Azumacho2707-2	○ 16-C-4
	74	Azumakita Shogakko	Kunisadamachi2chome1627	○ 16-C-2
	75	Azuma Kominkan	Tabecho3chome2090	— 17-D-4
	76	Azuma Taiikukan	Tabecho3chome2090	— 17-D-4
	77	Azumaminami Shogakko	Mimurocho4290	○ 21-F-2
	78	Azumasutajiamu	Tabecho3chome1908	— 17-D-3
	79	Miyamasenta	HigashiObokatacho3243-2	○ 23-D-2
	80	Azuma Yochien	Azumacho2672-1	— 16-C-4
	81	Seishinriyosenta	Kunisadamachi2chome2374	— 16-B-2
Sakai Area	82	Sakai Shogakko	Sakai515	○ 33-D-1
	83	Isesaki Kototokubetsusushienagakko	Sakai492	— 33-D-1
	84	Sakaiminami Chugakko	Sakai188	— 33-D-2
	85	Sakai Taiikukan	Sakai609-1	— 28-C-4
	86	Sakai Budokan	Sakaihagiwara1750-2	— 28-C-4
	87	Sakai Kominkan	Sakai598-1	— 28-C-4
	88	Sakaionuma Shogakko	Sakaishimofuchina2020	○ 27-F-2
	89	Sakaionuma Kominkan	Sakaishimofuchina2023-1	— 27-F-2
	90	Sakaikita Chugakko	Sakaishimofuchina2011-1	— 27-F-2
	91	Sakainishi Chugakko	Sakaishimotakeshi872-2	— 27-F-4
	92	Sakaigoshi Shogakko	Sakaishimotakeshi831	○ 27-F-4
	93	Sakaigoshi Kominkan	Sakaishimotakeshi862-3	— 27-F-4
	94	Kyusakaishima Shogakko	Sakaishimamura1968-40	○ 32-C-4
	95	Sakaishimamura Kominkan	Sakaishimamura2720	— 33-D-4
	96	Sakai Higashi Shogakko	Sakaiyoneoka 253-2	○ 33-D-1
	97	Sakaishigashi Kominkan	Sakaiyoneoka764-1	— 33-D-2
	98	Sakaishakaifukushisenta	Sakaionaduka296	— 29-E-4
	99	SakaishangyoshinkoKaikan	Sakaishinei13-6	— 29-E-4
	100	Sakaishidosenta	Sakaishinei12-4	— 29-E-4
101	Sakaishigobunkasenta	Sakaishijima818	— 28-C-3	

福祉 Welfare Evacuation Shelters				
Number	Facility Name	Address	Disaster Warehouse	Coordinated Map
F1	Shougaishasenta	Nishidacho71	○	19-F-2
F2	Fukushipuraza	Chucho26-22	○	19-F-3
F3	Kenkoukanrisenta	Tsunatorimachi1155	○	19-E-3
F4	Shiminpuraza	Tomizukacho220-13	○	25-E-4
F5	Akaborihokenfukushisenta	Nishikubocho2chome123-1	○	12-C-4
F6	Miyamasenta *2	HigashiObokatacho3243-2	○	23-D-2
F7	Sakaishiikifukushisenta *2	Sakaikamitakeshi972-1	○	27-E-4

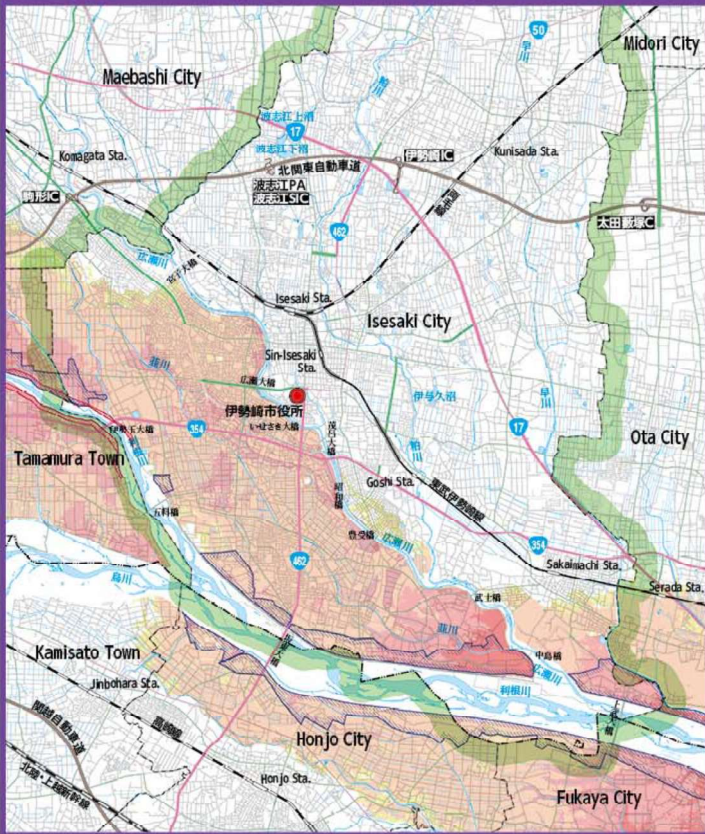
Evacuation facilities that allow pets to be brought into the living area				
Number	Facility Name	Address	Disaster Warehouse	Coordinated Map
P1	Dainishimin Taiikukan *3	Inuicho75-5	—	19-F-1

- \*1--Designated emergency evacuation site, not a designated shelter.
- \*2--Open only during earthquakes.
- \*3--Open only during times of flooding.

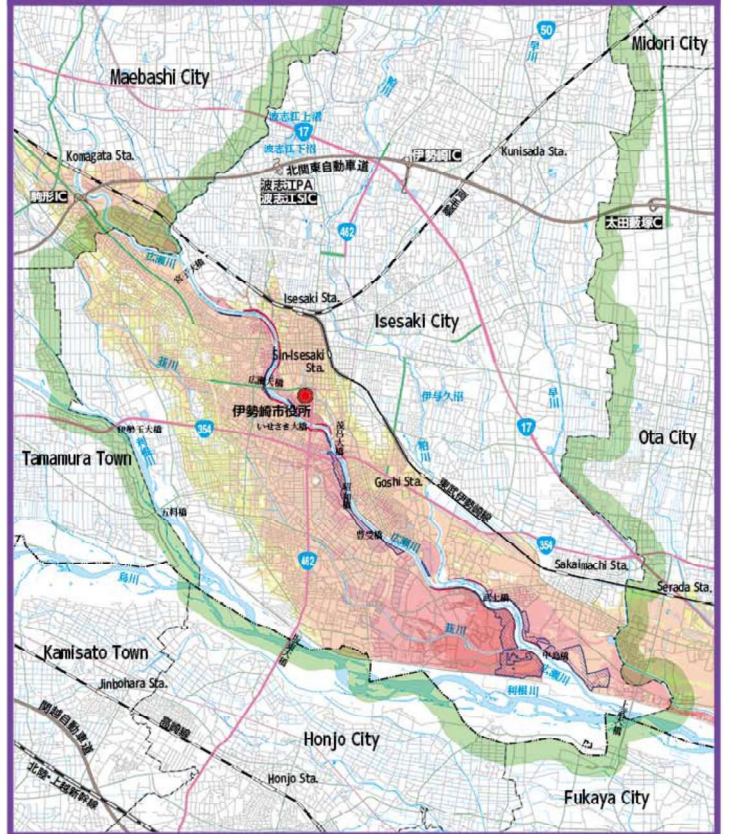
# Flooding Potential Area Map by River

Hazard Maps

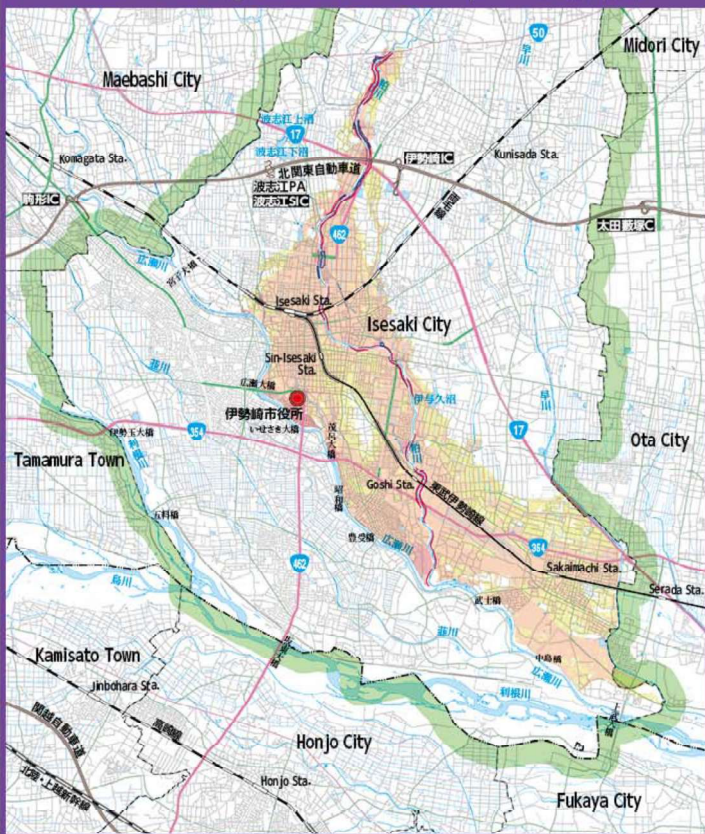
**Tonegawa Flooding Potential Area Map** 0 2 4km  
1 : 130,000



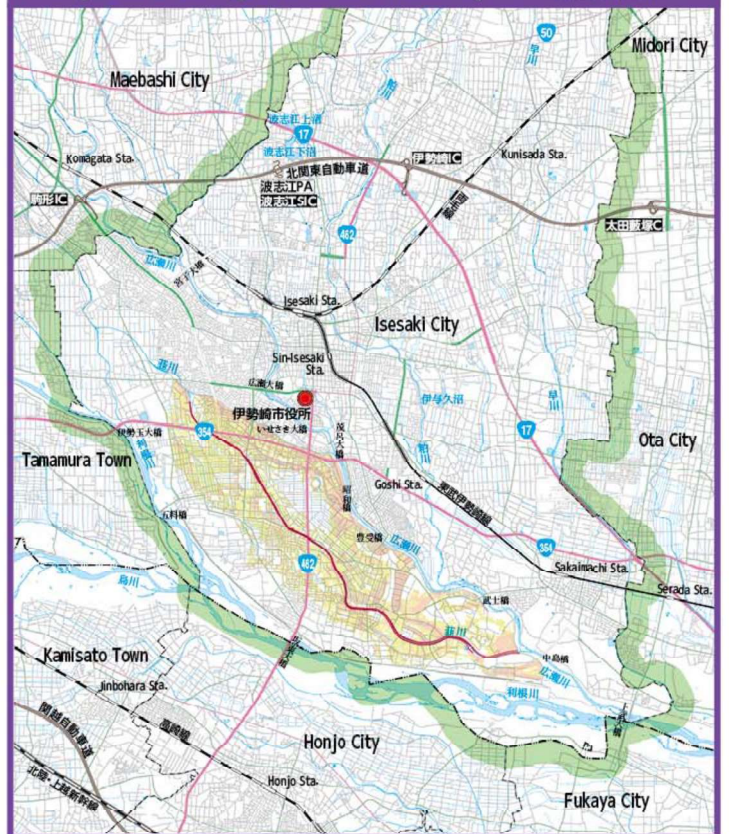
**Hirosegawa Flooding Potential Area Map** 0 2 4km  
1 : 130,000



**Kasukawa Flooding Potential Area Map** 0 2 4km  
1 : 130,000



**Niragawa Flooding Potential Area Map** 0 2 4km  
1 : 130,000



- This page lists, only designated sections of flood forecast rivers and rivers whose water levels are known by the ministry of land, Infrastructure, Transport and Tourism and Gunma Prefecture.
- For Gunma Prefecture-managed rivers other than the designated sections, please refer to the "Gunma Prefecture Flood Risk Potential Map".

Scan here for the Gunma Prefecture  
"Gunma Prefecture Flood Risk  
Potential Map" HP



# Whole Index Map

