

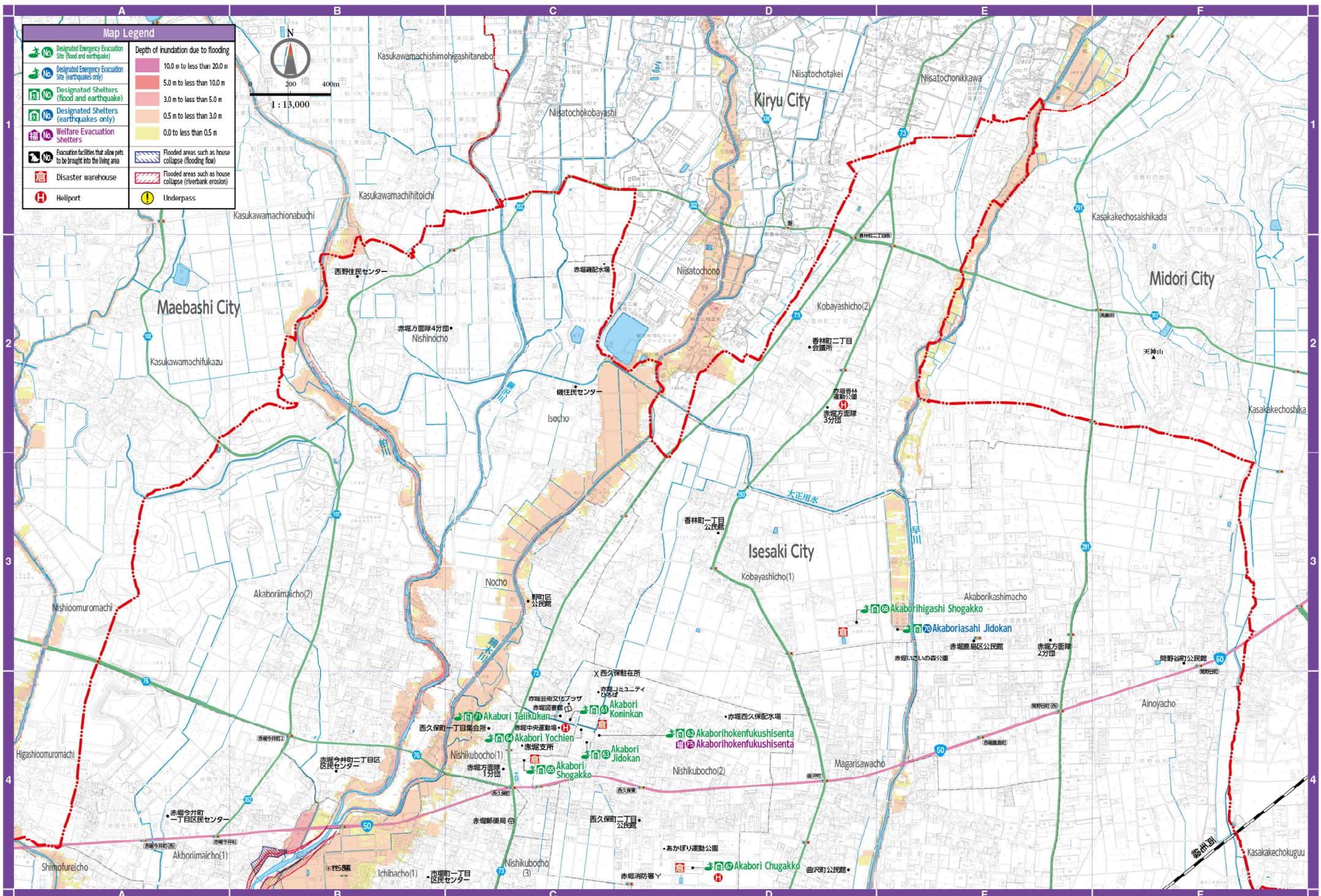
**Map Legend**

	Designated Emergency Evacuation Site (flood and earthquake)	<b>Depth of inundation due to flooding</b>		10.0 m to less than 20.0 m
	Designated Emergency Evacuation Site (earthquakes only)			5.0 m to less than 10.0 m
	Designated Shelters (flood and earthquake)			3.0 m to less than 5.0 m
	Designated Shelters (earthquakes only)			0.5 m to less than 3.0 m
	Welfare Evacuation Shelters			0.0 m to less than 0.5 m
	Education facilities that allow pets to be brought into the living area		Flooded areas such as house collapse (flooding flow)	
	Disaster warehouse		Flooded areas such as house collapse (riverbank erosion)	
	Heliport		Underpass	

N

0 200 400m

1 : 13,000





**Map Legend**

	Depth of inundation due to flooding	

N

0 200 400m

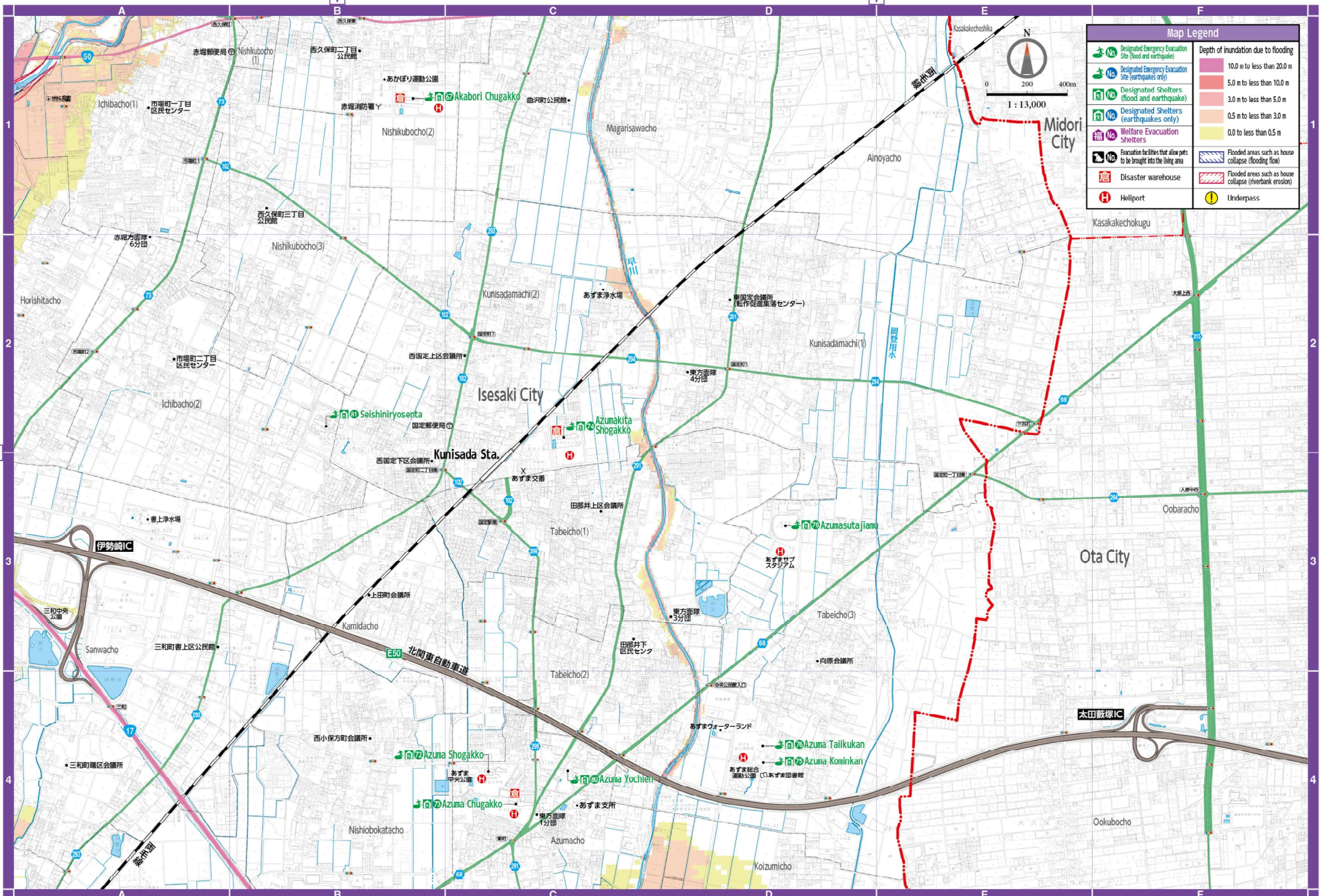
1 : 13,000



Hazard Maps

Hazard Maps





**Map Legend**

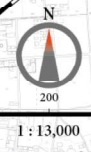
- Designated Emergency Evacuation Site (flood and earthquake)
- Designated Emergency Evacuation Site (earthquakes only)
- Designated Shelters (flood and earthquake)
- Designated Shelters (earthquakes only)
- Welfare Evacuation Shelters
- Evacuation facilities that allow pets to be brought into the living area
- Disaster warehouse
- Helipoint
- Underpass

**Depth of inundation due to flooding**

- 10.0 m to less than 20.0 m
- 5.0 m to less than 10.0 m
- 3.0 m to less than 5.0 m
- 0.5 m to less than 3.0 m
- 0.0 to less than 0.5 m

**Flooded areas such as house collapse (flooding flow)**

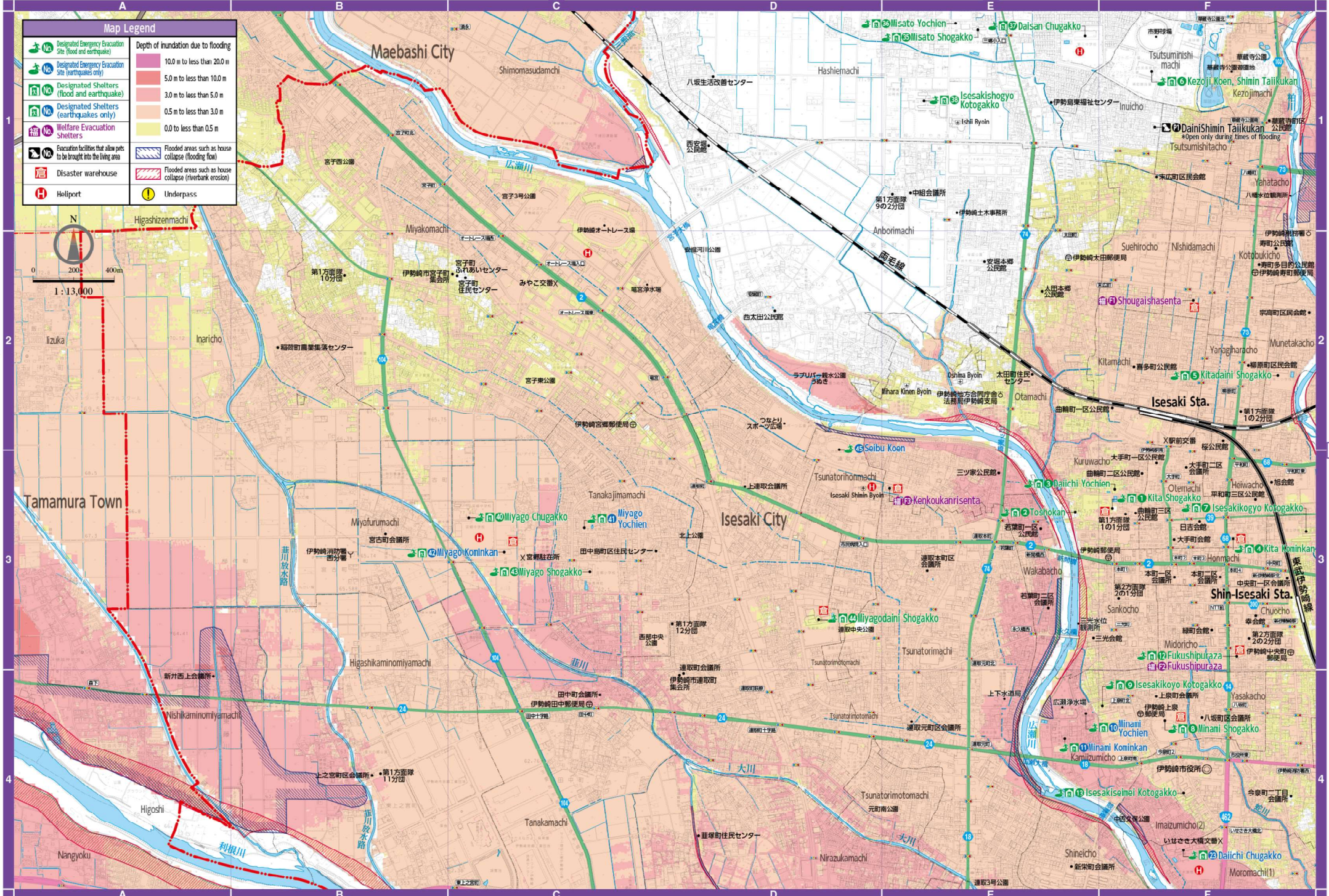
**Flooded areas such as house collapse (riverbank erosion)**





**Map Legend**

	Depth of inundation due to flooding	



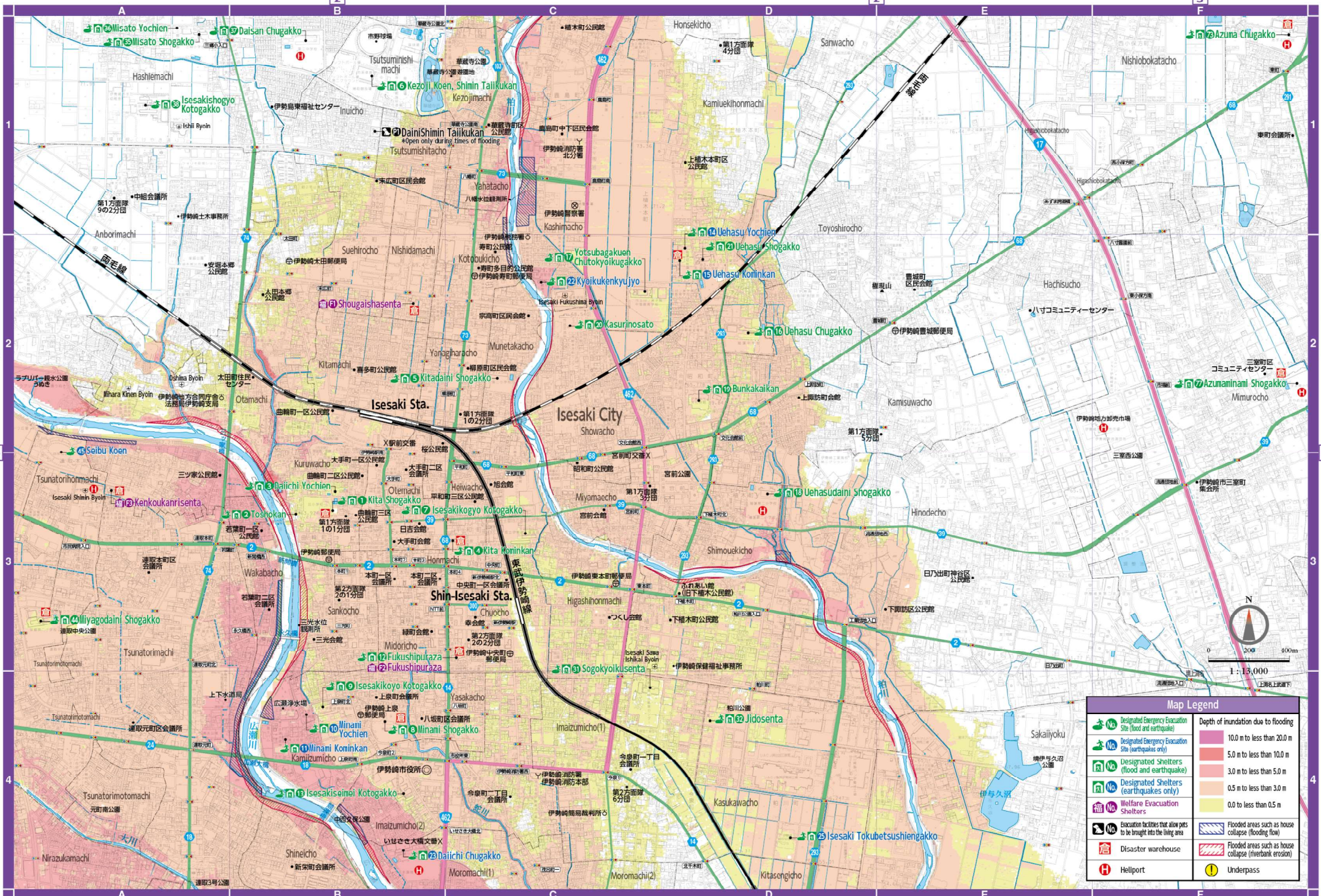
Hazard Maps

Hazard Maps



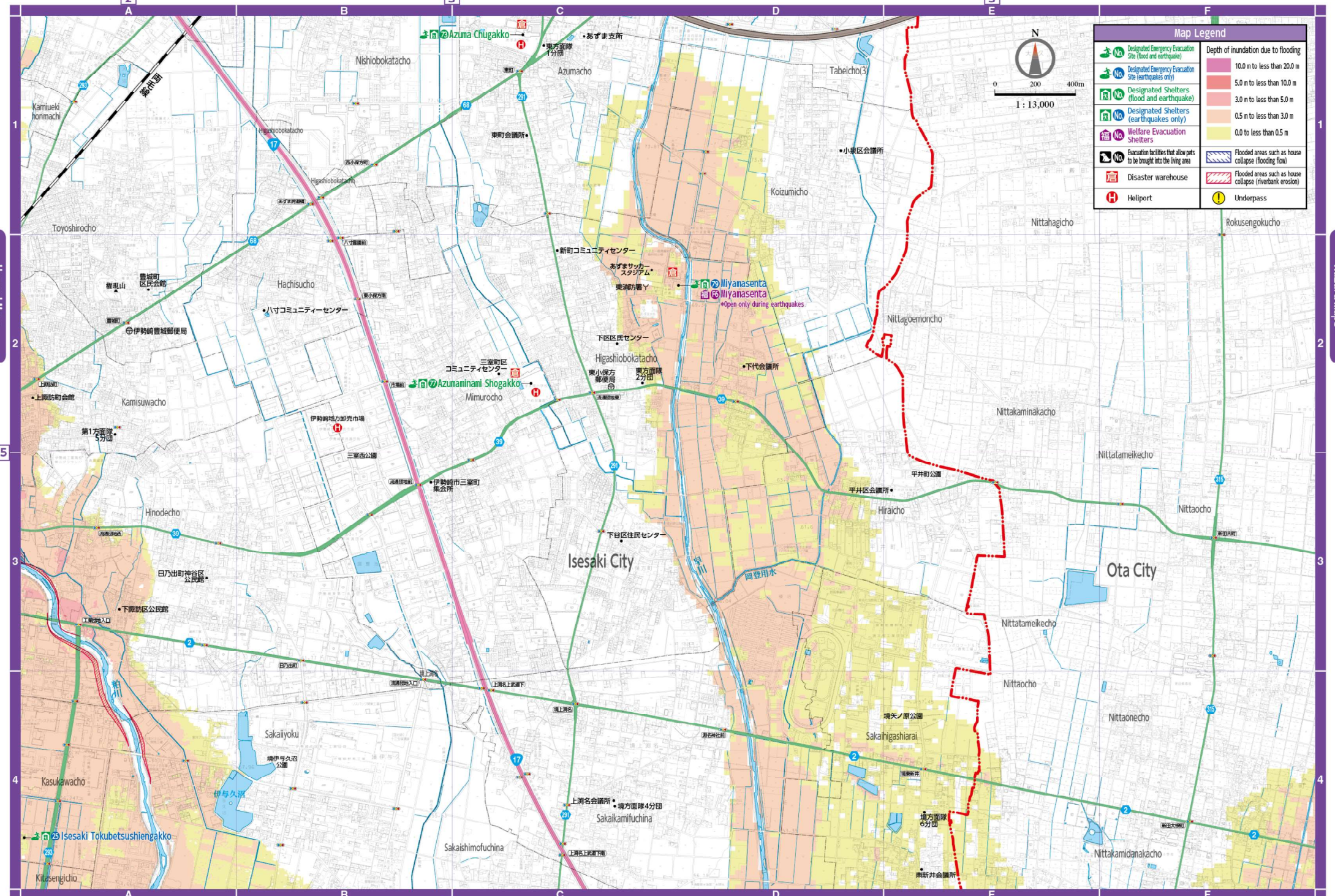
Hazard Maps

Hazard Maps



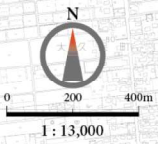
Map Legend	
	Designated Emergency Evacuation Site (flood and earthquake)
	Designated Emergency Evacuation Site (earthquakes only)
	Designated Shelters (flood and earthquake)
	Designated Shelters (earthquakes only)
	Welfare Evacuation Shelters
	Evacuation facilities that allow pets to be brought into the living area
	Disaster warehouse
	Heliport
	Underpass
	Depth of inundation due to flooding 10.0 m to less than 20.0 m
	5.0 m to less than 10.0 m
	3.0 m to less than 5.0 m
	0.5 m to less than 3.0 m
	0.0 to less than 0.5 m
	Flooded areas such as house collapse (flooding flow)
	Flooded areas such as house collapse (riverbank erosion)



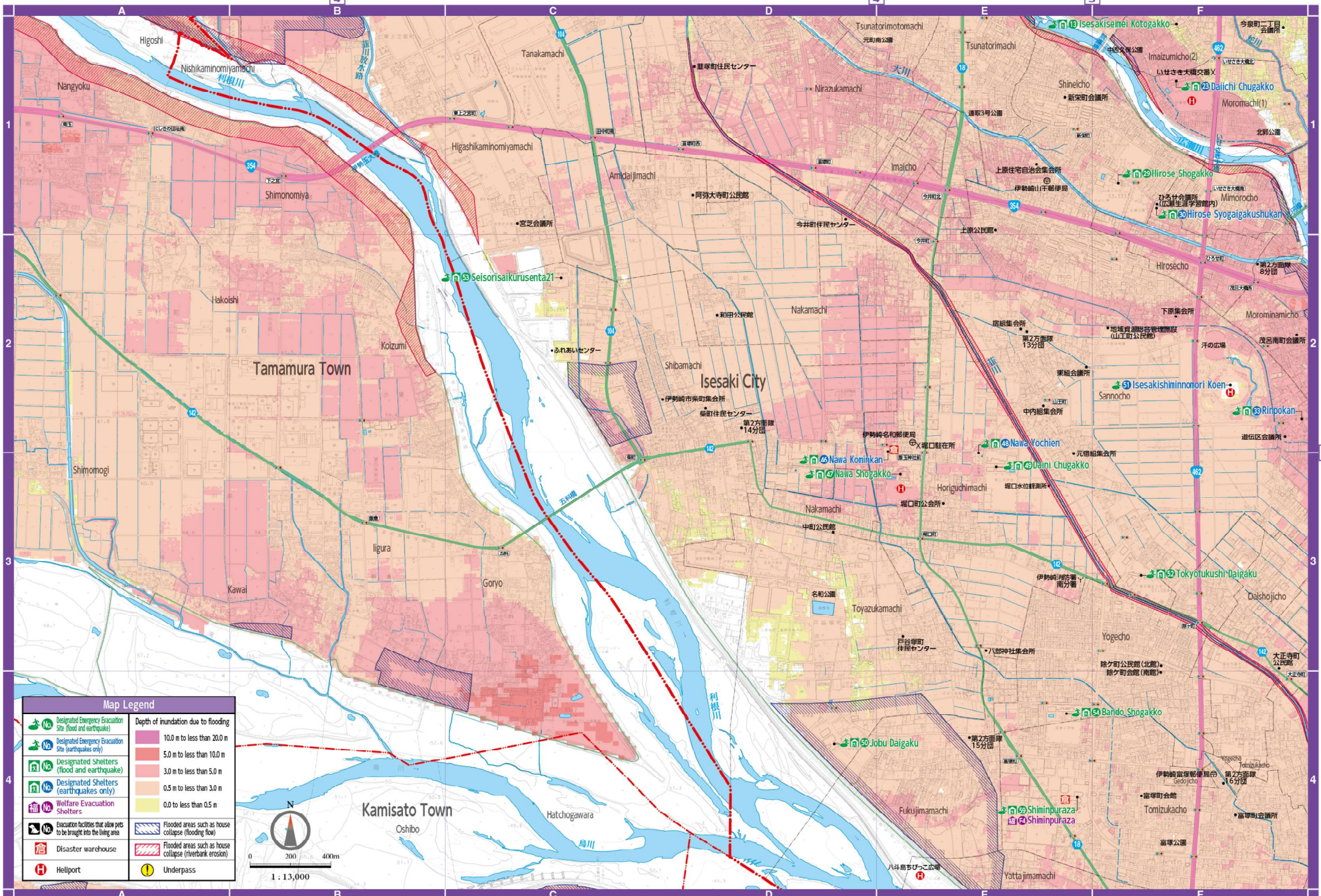


**Map Legend**

Designated Emergency Evacuation Site (flood and earthquake)	<b>Depth of inundation due to flooding</b>
Designated Emergency Evacuation Site (earthquake only)	
Designated Shelters (flood and earthquake)	
Designated Shelters (earthquake only)	
Welfare Evacuation Shelters	
Evacuation facilities that allow pets to be brought into the living area	Flooded areas such as house collapse (flooding flow)
Disaster warehouse	Flooded areas such as house collapse (riverbank erosion)
Heliport	Underpass





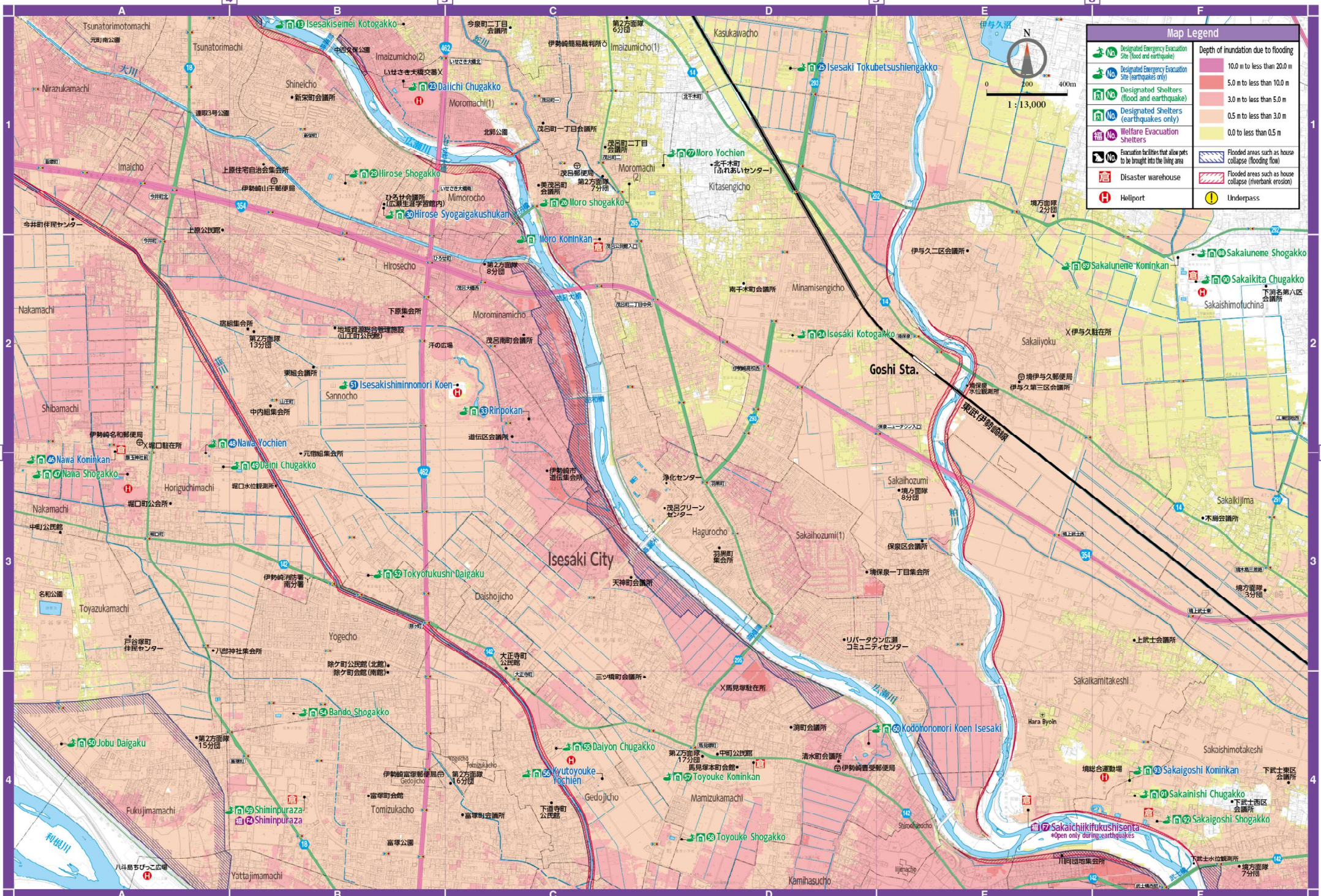


**Map Legend**

Designated Emergency Evacuation Site (flood and earthquake)	Depth of inundation due to flooding	10.0 m to less than 20.0 m
Designated Emergency Evacuation Site (earthquakes only)		5.0 m to less than 10.0 m
Designated Shelters (flood and earthquake)		3.0 m to less than 5.0 m
Designated Shelters (earthquakes only)		0.5 m to less than 3.0 m
Welfare Evacuation Shelters		0.0 to less than 0.5 m
Evacuation facilities that allow pets to be brought into the living area	Flooded areas such as house collapse (flooding flow)	Flooded areas such as house collapse (riverbank erosion)
Disaster warehouse	Underpass	
Heliport		

Scale: 1 : 13,000



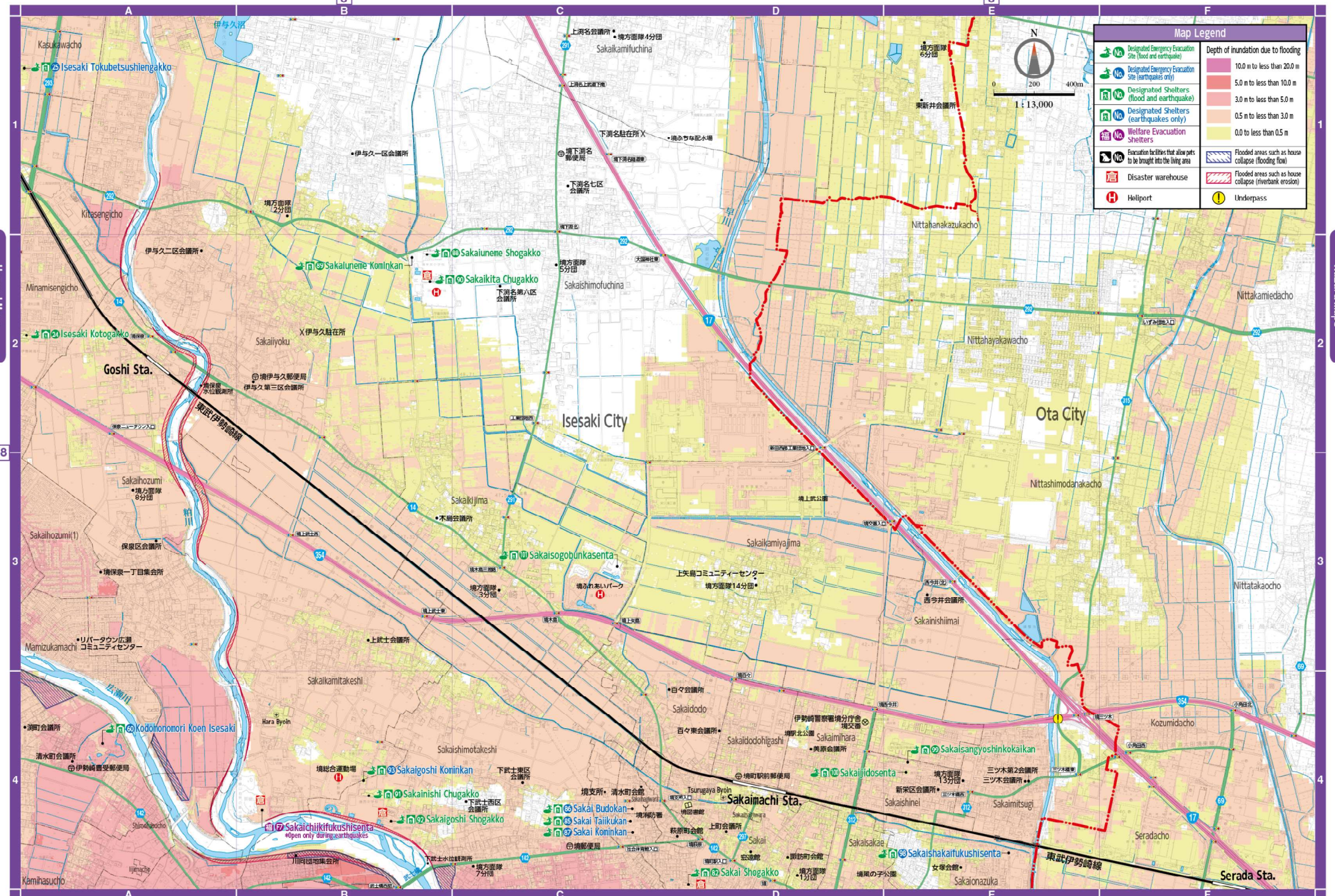


**Map Legend**

	Designated Emergency Evacuation Site (flood and earthquake)	<b>Depth of inundation due to flooding</b> 10.0 m or less than 20.0 m 5.0 m or less than 10.0 m 3.0 m or less than 5.0 m 0.5 m or less than 3.0 m 0.0 to less than 0.5 m	
	Designated Emergency Evacuation Site (earthquake only)		
	Designated Shelters (flood and earthquake)		
	Designated Shelters (earthquake only)		
	Welfare Evacuation Shelters		
	Evacuation facilities that allow pets to be brought into the living area		Flooded areas such as house collapse (flooding flow)
	Disaster warehouse		Flooded areas such as house collapse (riverbank erosion)
	Heliport		Underpass





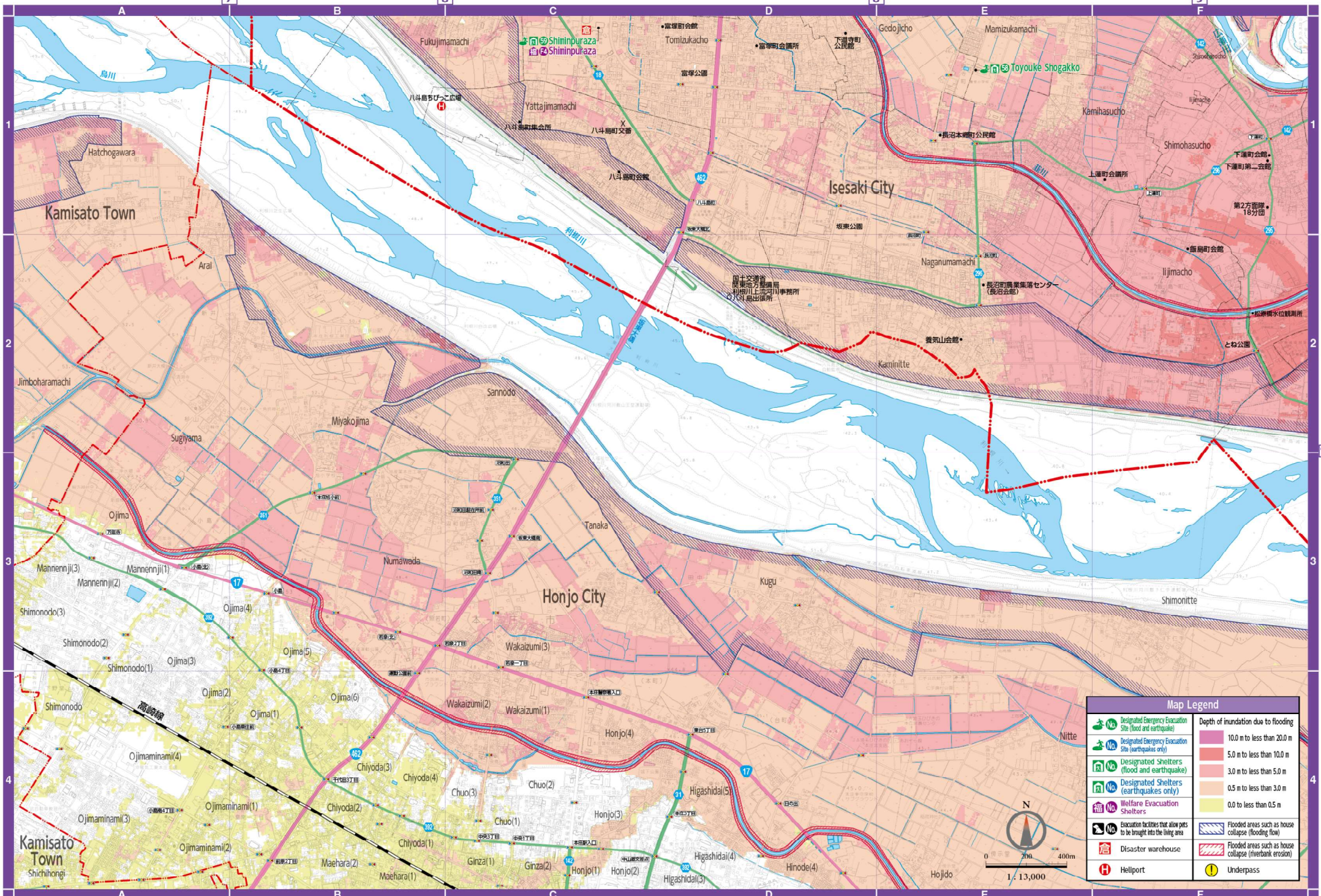


**Map Legend**

	<b>Depth of inundation due to flooding</b>





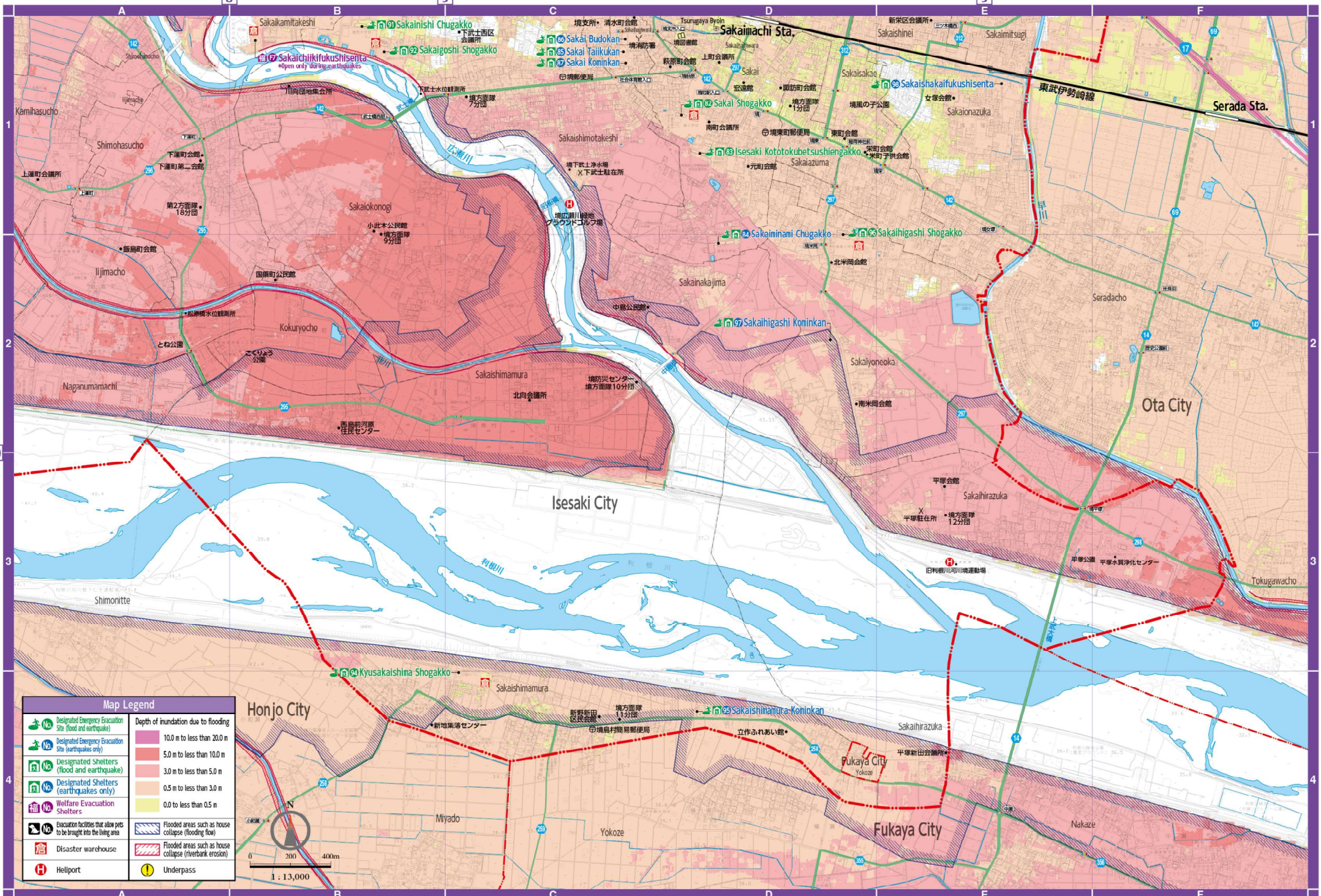


**Map Legend**

Designated Emergency Evacuation Site (flood and earthquake)	<b>Depth of inundation due to flooding</b> 10.0 m to less than 20.0 m 5.0 m to less than 10.0 m 3.0 m to less than 5.0 m 0.5 m to less than 3.0 m 0.0 to less than 0.5 m
Designated Emergency Evacuation Site (earthquakes only)	
Designated Shelters (flood and earthquake)	
Designated Shelters (earthquakes only)	
Welfare Evacuation Shelters	
Evacuation facilities that allow pets to be brought into the living area	Flooded areas such as house collapse (flooding flow)
Disaster warehouse	Flooded areas such as house collapse (riverbank erosion)
Heliport	Underpass







**Map Legend**

	Designated Emergency Evacuation Site (flood and earthquake)	<b>Depth of inundation due to flooding</b>		10.0 m to less than 20.0 m
	Designated Emergency Evacuation Site (earthquake only)		5.0 m to less than 10.0 m	
	Designated Shelters (flood and earthquake)		3.0 m to less than 5.0 m	
	Designated Shelters (earthquake only)		0.5 m to less than 3.0 m	
	Welfare Evacuation Shelters		0.0 to less than 0.5 m	
	Evacuation facilities that allow pets to be brought into the living area		Flooded areas such as house collapse (flooding flow)	
	Disaster warehouse		Flooded areas such as house collapse (riverbank erosion)	
	Heliport		Underpass	

**Honjo City**

Scale: 1 : 13,000

0 200 400m