

Snow Damage measures

In case of heavy snow there is a possibility that the road will be in trouble, recommending you need to prepare snow equipment, there is also lack of daily necessities, stock foods, water, liquid drinks, in case of block out use heaters it will help a lot. Better to have also snow scoop.

Avoid going outside if it is needless, or not emergency.

If it is snowing heavily, and if it is not necessary or emergency matters avoid going outside, but if there is no choice that you need to go outside, please use shoes that not easily to slip, use glove to use the two hands easily. If you use car here are the following to pay attention.

- Use snow tire or chain.
- As much as possible when driving make more distance between two cars.
- Slow driving at curve place.
- Avoid the traffic difficult steep hill place.



Attention for shoveling snow.

- Before shoveling snow need to exercise your body
- As much as possible work with more than 2 person.
- Don't put the snow in the doorway or sidewalk, put it in the sunny place.
- The snow in the apartment or mansions put inside the area.
- Avoid parking your car in the area for cleaning the snow because your interrupted the roadway.
- ※ Be careful about the snow accumulation in your carport, garage, plastic green house, it may collapse, and also be careful about the snowfall from the roof.



The snow on the road is cleaned by the road administrator during the heavy snowy season, but the main road is cleaned with priority, so it may be delayed to clean the life and school commuting road. Please have a cooperation to shovel the snow with your neighbors, so that the emergency vehicles can easily pass the road.

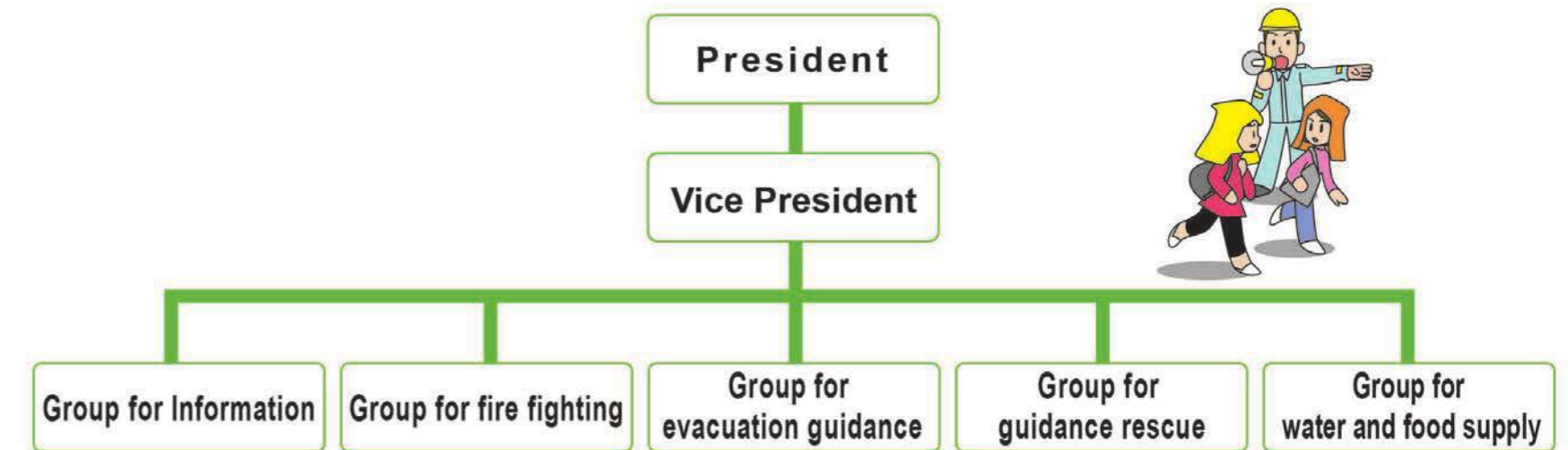
Contact Related Institution

Administration Related Institution		Designated hospitals for emergency	
Name	Phone	Name	Phone
Isesaki City Hall	0270-24-5111	Isesaki Shimin Hospital	0270-25-5022
Akabori Branch	0270-62-1151	Isesaki Sawa Ishikai Hospital	0270-24-0111
Azuma Branch	0270-62-1311	Tsurugaya Hospital	0270-74-0670
Sakai Branch	0270-74-1111	Fukushima Hospital	0270-24-3456
Isesaki Fire Headquarters	0270-25-3510	Mihara Memorial Hospital	0270-24-3355
Isesaki Police Office	0270-26-0110	Ishii Hospital	0270-21-3111
Isesaki Administration Prefectural Tax Office	0270-25-0782	Hara Hospital	0270-74-0633
Isesaki Health and Welfare Office	0270-25-5066	Oshima Hospital	0270-25-2428
Isesaki Engineering Works Office	0270-25-4010		

Voluntary organization for disaster prevention

When a disaster occurs, to prevent it and minimize the damage, not only your home but also the whole community you live in must be protected, then finally you and your family can be safe. The voluntary organization for disaster prevention has a philosophy of "We protect our community ourselves.", and is the organization where citizens cooperate with each other to carry out disaster prevention activities to create a safe and secure town. It is organized in all administrative wards in Isesaki.

List of the voluntary organization for disaster prevention (example)



Regular Activities

① Expanding knowledge of disaster prevention

Demonstration for disaster prevention in the community festival and sports festival, enlightenment with circular notice, etc.

② Things to prepare for disaster prevention

Maintenance and management of disaster prevention materials such as work tools like helmet, fire extinguisher, stretcher, hammer, emergency medical kit, survival emergency foods and other stock pile, etc.



③ Patrol and Inspection of disaster prevention

Inspection for things that can burn easily, blocks, signboard and things that can collapse easily in the community, etc.

④ Conducting the Disaster Prevention Drill

Drill of collection and communication of the information, fire extinguisher drill, evacuation guidance drill, rescue effort operation drill, water and food supply activity drill, etc.



Activity in case of disaster

① Collection and communication of the information

Collection and communication of correct information about the disaster from the official disaster prevention organization such as the city and the fire station, etc.



② Firefighting Activity

Activities for preventing fire and firefighting activities with fire extinguisher, bucket relay, etc.

③ Evacuation Guidance

Confirmation about the safety of the citizens in the community, guiding them to the safe place such as the evacuation place, supporting the people requiring assistance, etc.

④ Rescue effort operation

Rescue of the injured person or the person buried under the collapsed house, the first aid for them, transporting them to the first aid station, etc.



⑤ Water and food supply activity

Carrying and distributing stock foods and aid supply to the evacuation places

