

Disaster Preparedness General Map

~ Maintaining our precious life ~



■ Scan here for “Disaster Preparedness General Map” HP.
<https://www.city.isesaki.lg.jp/soshiki/somubu/anzen/bousai/10835.html>



Isesaki City

About the Disaster Preparedness General Map

In Isesaki city, flood hazard maps showing the extent and depth of flooding and the location of designated evacuation shelters when levees break due to rising rivers, and information on earthquake and snow damage countermeasures, etc. Were combined into one “Disaster Preparedness General Map”, the first edition was published in 2017.

Five years have passed since the publication of that first edition, and during this time the Basic Law on Disaster Countermeasures and the Flood Prevention Law have been revised. The revision of the Basic Disaster Countermeasures Act introduced five levels of alert from 1 to 5, the evacuation advisory was abolished and consolidated into an evacuation order, and the Flood Prevention Act additionally designated flood-prone areas for small and medium-sized rivers, except for designated sections of flood forecast rivers and rivers whose water levels are well known. The “Disaster Preparedness General Map” has been revised.

Use this “Disaster Preparedness General Map” to confirm the disaster risks around your home, the location of designated evacuation centers, evacuation routes, etc. and discuss them carefully with your family and community members.

Also, be sure to keep them in a readily accessible location in case of a disaster.

Contents

About the Disaster Preparedness General Map / Contents

Wind and Flood Damage

Evacuation Information and Actions to Take	P.1
Confirmation of Evacuation Actions	P.2
How to Receive Evacuation Information	P.3
Weather and Disaster Prevention Information	P.4-5
Create My Timeline	P.6-7

Hazard Maps

About the Flood Hazard Maps	P.8
List of Designated Emergency Evacuation Sites · Designated Evacuation Shelters, Etc. ...	P.9
Flooding Potential Area Map by River	P.10
Whole Index Map	P.11
Flood Hazard Map ① – ⑪	P.12-33

Earthquake

Earthquake Measures	P.34-35
Seismic Intensity Distribution Diagram	P.36-37

Snow Damage

Snow Damage Measures	P.38
----------------------------	------

Disaster Preparedness

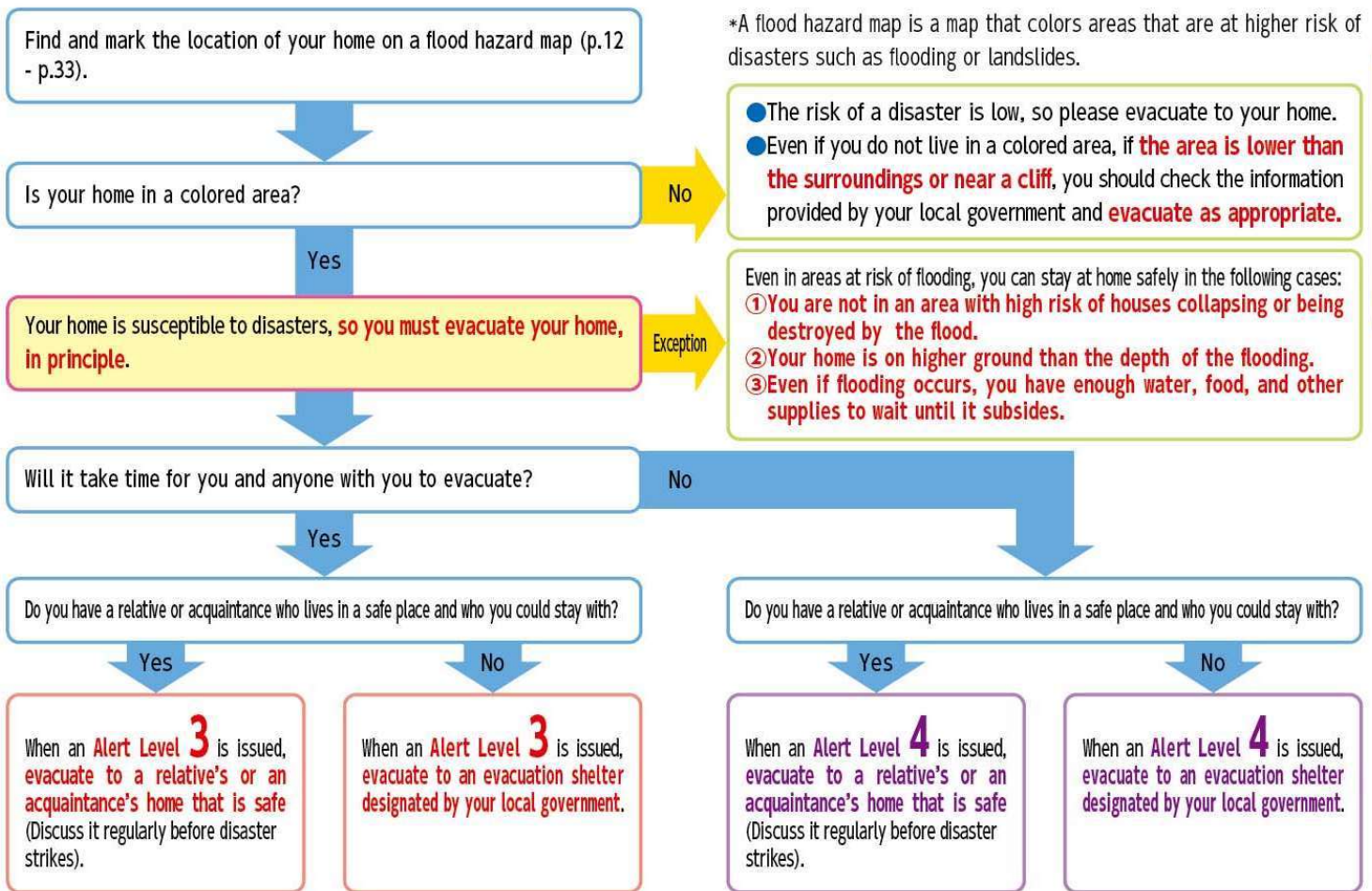
Emergency Supplies · Stockpiles	P.39
Support for People Requiring Special Care	P.40
Local Disaster Prevention Measures	P.41

Disaster Prevention Memo

Contact Information for My Home / Disaster Prevention Related Organizations / Disaster Message Dial · Disaster Message Board · ...	Back Cover
--	------------

Evacuation Information and Actions to Take

Flood Evacuation Action Decision Flowchart



Evacuation Information • Disaster Prevention Weather Information (Information Equivalent to Alert Level)

New evacuation information, etc. (Precaution Level)				River water level and rain information (Information equivalent to Alert Level)		
Alert Level	New evacuation information, etc.	Situation	You must do this	Disaster prevention weather information (Information equivalent to Alert Level)		
				Flood information (River)	Landslide information (Rain)	
5	Emergency Safety Assurance	Disaster occurrence/ Disaster impending	Life is in dangerous situation immediately ensure safety	Equivalent to 5	Information on flooding	Heavy Rain (landslide) Emergency Warning
~~<Be sure to evacuate by alert level 4 !>~~						
4	Evacuation Instruction	High risk of weather disaster	Be sure to evacuate everyone from dangerous places.	Equivalent to 4	Information on potential flood hazards	Landslide Alert Information
3	Evacuation of the Elderly, Etc.	Risk of weather disaster	For elderly people and people with disabilities who take time, evacuate from dangerous places.	Equivalent to 3	Information to provide a warning on flooding Flood Warning	Heavy Rain Warning
2	Heavy Rain Advisory Flood Advisory	Weather worsening	Check where to evacuate and what to bring in preparation for evacuation	Equivalent to 2	Information to call attention to flooding	—
1	Probability of Warnings	Risk of Weather worsening	Improve the mental preparation about disaster.	Equivalent to 1	—	—

*The Alert Level (evacuation information) issued by cities and other organizations and the Alert Level equivalent information issued by the Japan Meteorological Agency, etc. do not necessarily match in timing or target area.

Confirmation of Evacuation Actions

4 Evacuation Actions

Evacuate to an evacuation site designated by your local authority

- Always check your evacuation destination, evacuation route, and whether it can be used during floods.



Evacuate to a friend or relative's home in a safe area

- Talk to them in advance about evacuating during a disaster.

Note : Check the Hazard Map to see whether the area is safe.



Evacuate to a hotel, inn etc. in a safe area

- Normal accommodation charges will apply. Try to make a reservation and/or check availability in advance.

Note : Check the Hazard Map to see whether the area is safe.



Shelter indoors (home evacuation, vertical evacuation)

- Check the Hazard Map to see whether you meet the "3 conditions" to shelter indoors.



イラスト提供：内閣府

If you meet the "3 conditions" then it may be possible to shelter indoors even during a flood

- ① Your home is not located in an assumed flooding area where houses are likely to collapse



Flooding flow

- Wooden houses may collapse due to fast-moving water.

Riverbank erosion

- Your entire house may be washed away as the ground crumbles beneath it.

Note : If you are in an area designated as a flood risk zone where house collapses and similar hazards are expected, early evacuation is necessary.

- ② Your home is higher up than the flooding level

3rd/4th floor	5-10 m (water level : the 3rd level floor - the 4th level eaves)
2nd floor	3-5 m (water level : the 2nd level floor - eaves)
1st floor	0.5-3 m (water level : the 1st level floor - eaves)
Below 1st floor	Below 0.5 m (water level : below the 1st level floor)

イラスト提供：内閣府

- ③ You can hold out until the water recedes and have sufficient supplies of water/food, etc.

- You may struggle to secure water, food, medicine, or may be unable to use electricity, gas, water, and other utilities.



Going outside during torrential is dangerous, even in a car. If you have no choice but to spend the night in your car, take great care to check your surroundings, etc., to make sure you are not caught in a flood.

Precautions for Evacuation

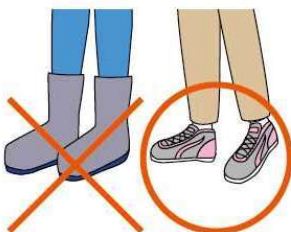
Depth of water difficult to walk through

- It is difficult to locate gutters and manholes, etc., and there is a risk of stepping out of line.
- If the water flow is fast, there is a risk of tipping over and being swept away.
- Even adults may have difficulty walking and may be in danger.
- Children may fall over and be swept away.



Don't wear boots

- Wear athletic shoes or other shoes, as boots are difficult to move in water.



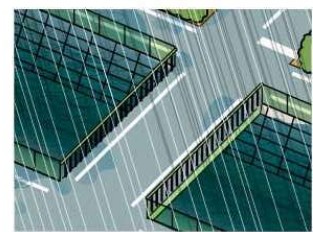
Be careful where you stand

- Your feet will not be visible due to the muddy water.
- When walking, use an umbrella or a long stick as a walking stick to check your footing.



Stay away from rivers and streams

- It is dangerous because of the possibility of rising water and flooding.
- Do not go to check on rivers and waterways.



How to Receive Evacuation Information

Isesaki Information Mail Registration required

- This service provides information on disasters and disaster prevention via e-mail.

How to register Please register by sending a blank email to the following e-mail address from your cell phone or other device.

To t-isesaki@sg-p.jp

Scan here ▶
for Isesaki Information e-mail



TV Data Broadcasting

- Information can also be collected on TV. By pressing the d button on the remote control while watching a program, the latest weather information, river level information, evacuation information, etc. can be checked on the TV's data broadcasting.



Fax Delivery Service Registration required

- This service delivers information on evacuation by fax.

How to register Fill out the application form and send it to the Safety and Security Division in person or by mail or fax.

*Application forms are available at the Safety and Security Division (Anshinzenka). It can also be downloaded from the City homepage.

To 〒372-8501 (no address required) Safety and Security Division (Anshinzenka)
FAX 26-6123

Yahoo! Disaster Prevention Bulletin App

- Yahoo! Disaster Prevention Bulletin App, evacuation information and other information is distributed to users in designated areas.

Scan here ▶
for Yahoo! Disaster Prevention Bulletin App



Emergency Bulletin Mail (Area Mail)

- This service delivers emergency information distributed by the government and the city to cell phones and smartphones within the area. Emergency earthquake alerts, special weather warnings, evacuation information, etc. are delivered regardless of whether or not you have registered for Isesaki Information Mail.

*Setting is required for some models.



SNS X and Facebook

- Disaster and evacuation information will be posted on the City's official account.



[Account]
@isesakicity_lg



▲ Scan here for the City's official X account



[Account]
@isesakicity



▲ Scan here for the City's official Facebook account

HP City Homepage

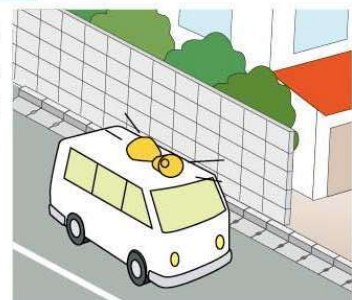
- In addition to evacuation information issued by the city, the site provides comprehensive disaster prevention maps, links to check weather information and river level information, and other information useful for making evacuation decisions. In the event of a disaster, detailed information is provided on an emergency page dedicated to disaster information.

Scan here ▶
for the City Homepage



Public Information Vehicle

- The public information vehicle makes the rounds to provide information on evacuation and the opening of evacuation shelters.



VACAN: Information on the opening and congestion of evacuation shelters

- 'VACAN' is a service that allows you to check the opening and congestion status of designated evacuation shelters in real time. The status of shelters is displayed on the map in four levels: **空いています - Vacant** **やや混雑 - Fairly Crowded** **混雑 - Crowded** **満 - Full** . **Closed** is displayed when no shelter is open.

Scan here for confirmation ▶



Weather and Disaster Prevention Information

Information from Japan Meteorological Agency

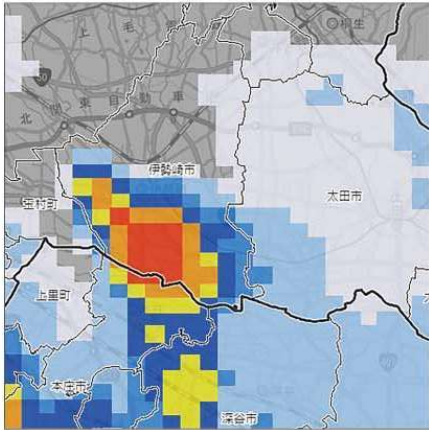
The following information and other information can be found on the Japan Meteorological Agency Homepage.

Scan here for the Japan Meteorological Agency HP



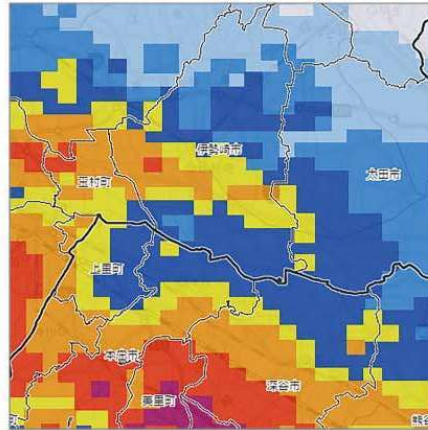
High-resolution Precipitation Nowcasts

- Displays the location and intensity of rainfall expected every 5 minutes for the next hour.



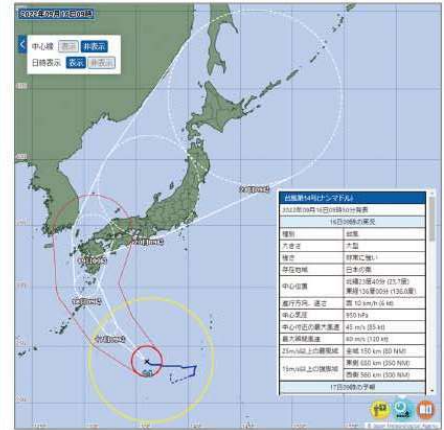
Precipitation Analysis / Forecasts

- Displays hourly forecasts of precipitation for the next 15 hours.



Tropical Cyclone Information

- Displays the current typhoon status, expected course, size, etc.

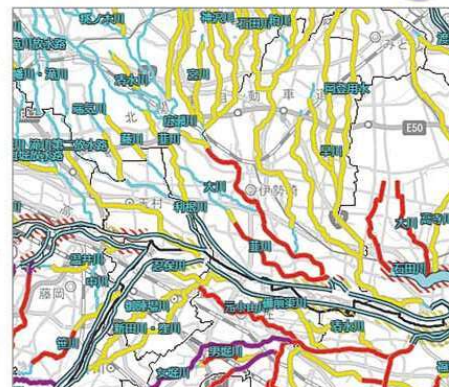


Risk Maps

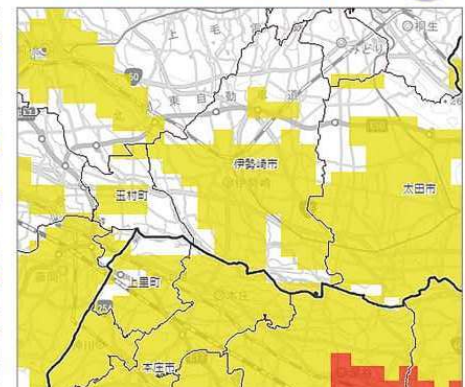
- The map displays color-coded information on the heightened risk of inundation, flooding, and other hazards.



Flood Risk <Real-time flood risk map>



Inundation Risk <Real-time inundation risk map>



画像提供：気象庁

Water Level Information on Rivers

Ministry of Land, Infrastructure, Transport and Tourism • Disaster Information for River

- Water levels and rainfall of major rivers can be checked.



Gunma Prefecture River Disaster Prevention Information "Kawamirugunma"

- Information on water levels and live camera images of rivers set up by Gunma Prefecture and the Ministry of Land, Infrastructure, Transport and Tourism can be checked.



Scan here for "Kawamirugunma" HP



Scan here for Disaster Prevention Information for River HP



Weather Information

Criteria for issuing Special warnings · Warnings · Advisory, etc.

Maebashi District Meteorological Observatory (as of June 8, 2023)

Heavy Rain Emergency Warning	Typhoons and torrential rains are expected to cause heavy rainfall that occurs only once every several decades.
Storm Emergency Warning	When storms are expected to occur due to a typhoon that occurs once every few decades or a similar extratropical cyclone.
Heavy Rain (inundation) Warning	Surface rainfall index benchmark : 21
Flood Warning	Refer to the Japan Meteorological Agency homepage
Storm Warning	Average wind speed 18 m/s
Snowstorm Warning	Average wind speed 18 m/s with snow
Heavy Snow Warning	12-hour snowfall depth : 10 cm
Heavy Rain Advisory	Surface rainfall index standard : 11 Soil rainfall index standard : 100
Flood Advisory	Refer to the Japan Meteorological Agency homepage.
Gale Advisory	Average wind speed 13 m/s
Gale and Snow Advisory	Average wind speed 13 m/s with snow
Heavy Snow Advisory	12-hour snowfall depth : 5 cm
Record-Breaking Short-time Heavy Rainfall Information	Rainfall of 100 mm per hour
Weather Information on significant Heavy Rainfall	When very heavy rain continues to fall in the same location due to Linear Precipitation Zones

- Please refer to the Japan Meteorological Agency HP for information on the criteria for issuing flood warnings and advisories.

Scan here for the Japan Meteorological Agency
"List of Standards for Issuing Flood Warnings and
Advisories (Gunma Prefecture)" HP



Rain intensity

Rain intensity	1-hour rainfall	Situation
Slightly heavy rain	10 mm – 20 mm	Zinging rain
Heavy rain	20 mm – 30 mm	Even with an umbrella, you will get wet.
Torrential rain	30 mm – 50 mm	Roads become like rivers.
Very heavy rainfall	50 mm – 80 mm	Umbrellas become totally useless.
Violent rainfall	More than 80 mm	There is a feeling of pressure that makes it difficult to breathe.

Wind strength

Wind strength	Average wind speed (per second)	Situation
Slightly strong wind	10 m – 15 m	It becomes difficult to walk into the wind. Entire trees and power lines begin to sway.
Strong wind	15 m – 20 m	It becomes difficult to walk into the wind. Signs and tin sheets begin to come off.
Very strong wind	20 m – 30 m	You have to hold on to something to stand. Roof tiles may fly off.
Gale force winds	More than 30 m	Many trees fall over. Trucks in motion overturn.

Typhoon Size

Typhoon size (class)	Wind speed (per second) radius of 15 m or more
Large (big)	500 km or more but less than 800 km
Super large (very large)	800 km or more

Typhoon Strength

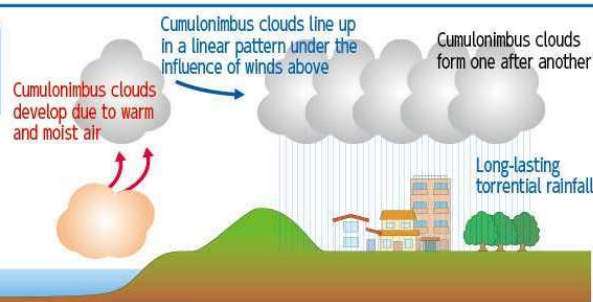
Typhoon strength (class)	Maximum wind speed (per second)
Strong	33 m or more but less than 44 m
Very strong	44 m or more but less than 54 m
Severe	54 m or more

- A typhoon is a tropical cyclone whose maximum wind speed (per second) reaches 17.2 m or more.

Linear Precipitation Zones

- A "Linear Precipitation Zones" is a rainfall area with strong precipitation created by developing cumulonimbus clouds that pass or remain in the same location for several hours.
- The length of the rainfall area ranges from 50 km to 300 km, and the width from 20 km to 50 km.
- The mechanism of "Linear Precipitation Zones" is not well understood, and it is difficult to predict their occurrence.

Typical image of a
Linear Precipitation
Zones



Create My Timeline

My Timeline is a timeline of your family's disaster prevention actions in the event of an approaching typhoon or other disaster. Please refer to the example below and fill in the evacuation actions for yourself and your family.

Creating My Timeline

Home and Evacuation Situation

1 Check the condition of your home

- Check to see if your home is in danger of flooding or other hazards

- Check the location of your home on the "Flood Hazard Map (P.12 - P.33)".
- Check if your home has a color for inundation depth and check ☒.

Flooding depth

10.0 to less than 20.0 m	<input type="checkbox"/>
5.0 to less than 10.0 m	<input type="checkbox"/>
3.0 to less than 5.0 m	<input type="checkbox"/>
0.5 to less than 3.0 m	<input type="checkbox"/>
0.0 to less than 0.5 m	<input type="checkbox"/>
No flooding expected	<input type="checkbox"/>

- Check if your house is located in a flood-prone area and check ☒.

Flooded areas such as house collapse (Flooding flow)	<input type="checkbox"/>
Flooding hazard area (Riverbank erosion)	<input type="checkbox"/>
<input type="checkbox"/> Not applicable	<input type="checkbox"/>

*If your house is located in a flood zone, you must evacuate in principle.

2 Check the location of your evacuation site

- Fill in the location where you will take shelter

- Use the "Flood Evacuation Behavior Assessment Flow (P.1)" to confirm the evacuation sites and timing for starting evacuation in the event of Storm and flood damage.
- Consider multiple evacuation sites (e.g. shelters, homes of relatives and acquaintances, hotels/inns, home evacuation, etc.)

*Fill in your evacuation destination.

Evacuation site 1	
Evacuation site 2	
Evacuation site 3	

3 Check the evacuation route

- Fill in hazardous areas along the evacuation route


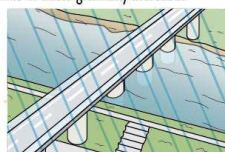
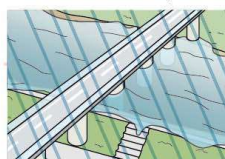
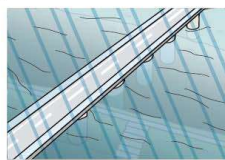

- Check if there are any dangerous places around your home or on the way to the evacuation site.

*Fill in in case you go through without detouring

Hazardous areas	
-----------------	--

Points for Preparation

- Before evacuating, check the weather, traffic, and flooding information.
- When evacuating, be sure to "prepare early" and "act early". During typhoons and heavy rain, it takes longer than usual to get around.
- If your plans to go out coincide with a typhoon or heavy rain, consider canceling your plans.
- Purchase daily necessities, emergency supplies, stockpiles, and go to hospital, etc., before the wind and rain become stronger.
- Continue to gather information even after the evacuation is complete.

Time axis	Roughly Action	Outside Situation	Evacuation Information • Disaster Prevention Weather Information (P.1)	Example of Entry	My Timeline (where to fill in)
3 days ago	Before the wind and rain become stronger	<ul style="list-style-type: none"> A typhoon develops Rain and wind become stronger as the typhoon approaches Rain becomes heavier and river levels begin to rise 	Equivalent to Alert Level 1 <ul style="list-style-type: none"> Typhoon forecast (early warning information) 	<ul style="list-style-type: none"> Check the flood hazard map Check the future weather forecast Check your family's future plans Check your home safety measures Check emergency supplies Charge cell phones • smartphones (to 100%) Check car fuel (refuel, recharge) 	
2 days ago		<ul style="list-style-type: none"> Rainwater collects in the river and the volume of water gradually increases 	Equivalent to Alert Level 2 <ul style="list-style-type: none"> Heavy rain advisory • Flood advisory Information to call attention to flooding Risk Maps : Caution (Yellow) 	<ul style="list-style-type: none"> Check the means of transportation to the evacuation site Check the status of heavy rain and river water levels Check traffic information 	
1 days ago	Begin evacuation activities	<ul style="list-style-type: none"> The river is full of water and may overflow 	Equivalent to Alert Level 3 <ul style="list-style-type: none"> Heavy rainfall warning • Flood warning Information to provide a warning on flooding Risk Maps : Warning (Red) 	<ul style="list-style-type: none"> Elderly people and those who need time to evacuate will prepare to evacuate 	
12 hours ago			Alert Level 3 Evacuation of Elderly, etc. Official announcement	<ul style="list-style-type: none"> Elderly people and those who need time to evacuate will evacuate Others will prepare to evacuate 	
2 hours ago	Secure your own safety	<ul style="list-style-type: none"> River is full of water and could overflow at any time 	Equivalent to Alert Level 4 <ul style="list-style-type: none"> Information on potential flood hazards Risk Maps : Danger (Purple) 	<ul style="list-style-type: none"> Everyone evacuates from the disaster hazard area to a safe place 	
0 hours		<ul style="list-style-type: none"> River overflows 	Alert Level 4 Evacuation Order Official announcement	<ul style="list-style-type: none"> Evacuation must be completed by Alert Level 4 	Evacuation must be completed by Alert Level 4
			Equivalent to Alert Level 5 <ul style="list-style-type: none"> Heavy Rain Emergency warning Information on flooding Risk Maps : Disaster imminent (Black) 	<ul style="list-style-type: none"> Take the best possible action to protect your life Evacuating outdoors is a dangerous situation. Ensure your own safety immediately by moving to a slightly safer location, etc. 	
			Alert level 5 Emergency Safety Assurance Official announcement	<ul style="list-style-type: none"> Evacuation must be completed by Alert Level 4 	Evacuation must be completed by Alert Level 4

*The timing of disaster prevention information, weather information, river information, etc., shown on this publication is for reference only. The actual timing of heavy rain and approaching typhoons may differ.

About the Flood Hazard Maps

These Flood Hazard Maps show the locations of the expected flood inundation zones, expected house collapse and other inundation zones, designated emergency evacuation sites and designated evacuation shelters in the city, as published by the Ministry of Land, Infrastructure and Transport, the river administrator, and Gunma Prefecture. The expected scale of heavy rain is as follows.

- Tonegawa.....River basin in Tonegawa · River in basin in Yattajima, quantity of rain for 72 hrs. 491 mm
- Hirosegawa.....River basin in Hirosegawa for 24 hrs. 589 mm · River basin in Tonegawa · River basin in Yattajima upper quantity of rain for 72 hrs. 491 mm
- Hayakawa.....River basin in Hayakawa quantity of river 24 hrs. 670 mm, River basin in Tonegawa · River basin upper in Yattajima quantity of rain for 72 hrs. 491 mm
- Kasukawa.....River basin in Kasukawa quantity of rain for 24 hrs. 666 mm
- Niragawa.....River basin in Niragawa quantity of rain for 24 hrs. 690 mm
- Aratogawa.....River basin in Aratogawa quantity of rain for 24 hrs. 670 mm
- Momonokigawa...River basin in Momonokigawa quantity of rain for 24 hrs. 589 mm
- Karasugawa...River basin in Karasugawa quantity of rain 72 hrs. 579 mm
- Kannagawa....River basin in Karasugawa quantity of rain for 72 hrs. 579 mm
- Koyamagawa...River basin in Koyamagawa quantity of rain for 24 hrs. 636 mm. River basin in Tonegawa · River basin upper in Yattajima quantity of rain for 72 hrs. 491 mm

Search on the Internet

Inundation Navi

This is a search system for inundation simulation by location.

- Animation shows the depth of inundation at a specified location.
- The arrival time and duration time of inundation at the specified location can be shown.
- The current river level information from the water level observation point is shown.

Scan here for the Inundation Navi HP



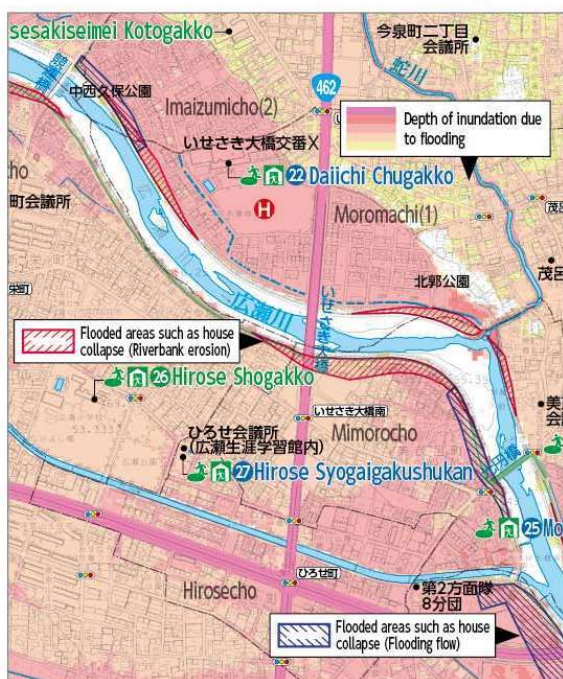
Gunma Prefecture Flood Inundation Area Map

For more information, please refer to "Gunma Prefecture Flood Inundation Assumption Area Map (List)".

Scan here for the Gunma Prefecture Flood Inundation Projection Area Map HP



How to Read Flood Hazard Maps



Potential Flooding Zones

This is the area that is expected to be inundated in the event of a river overflow.

- There are no zones between 10.0 m and less than 20.0 m in the city.

Depth of inundation due to flooding

- 10.0 to less than 20.0 m
- 5.0 to less than 10.0 m
- 3.0 to less than 5.0 m
- 0.5 to less than 3.0 m
- 0.0 to less than 0.5 m
- No flooding expected

Flooded areas such as house collapse (Flooding flow) (Riverbank erosion)



Flooding flow

Wooden houses may collapse due to the high velocity of the current.

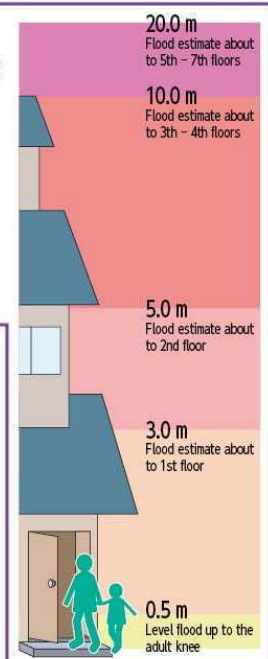


Riverbank erosion

The ground surface is scraped away, and houses may collapse.

Note : If you are in an area designated as a flood risk zone where house collapses and similar hazards are expected, early evacuation is necessary.

イラスト提供：内閣府



Evacuation facilities opened by the city

Designated Emergency Evacuation Site

- Keep safe yourself in case of emergency evacuate immediately at the evacuation place.

Designated Evacuation Shelters

- The victims can stay permanent depend on the limit of staying.

Welfare Evacuation Shelters

- These facilities are designed to accommodate the elderly, people with disabilities, and others who require special consideration.



Designated Emergency Evacuation Site and Designated Shelters (flood and earthquake)



Designated Emergency Evacuation Site (earthquake only)



Evacuation facilities that allow pets to be brought into the living area



Designated Emergency Evacuation Site and Designated Shelters (earthquakes only)



Welfare Evacuation Shelters

List of Designated Emergency Evacuation Site・Designated Evacuation Shelters, etc

Designated Emergency Evacuation Site・Designated Evacuation Shelters				
Area	Number	Facility Name	Address	Disaster Warehouse Coordinated Map
Kita area	1	Kita Shogakko	Kuruwacho28-24	○ 19-F-3
	2	Toshokan	Kuruwacho22-21	— 19-E-3
	3	Daiichi Yochien	Kuruwacho24-26	— 19-F-3
	4	Kita Kominkan	Heiwacho27-32	○ 19-F-3
	5	Kitadaini Shogakko	Munetachiko125	— 19-F-2
	6	Kezoji Koen, Shimin Taiikukan	Tsutsuminishicho93	— 15-D-4
Minami area	7	Isesakikogyo Kotogakko	Chuocho3-8	— 19-F-3
	8	Minami Shogakko	Kamiizumicho310	○ 19-F-4
	9	Isesakikoyo Kotogakko	Kamiizumicho212	— 19-F-4
	10	Minami Kominkan	Kamiizumicho619-1	— 19-E-4
	11	Fukushipuraza	Chuocho26-22	○ 19-F-3
	12	Isesakiseimei Kotogakko	Imaizumicho2chome331-6	— 19-F-4
Uehasu area	13	Uehasu Yochien	Kamiuekionmachi2740-2	— 21-D-2
	14	Uehasu Kominkan	Kamiuekionmachi2760	○ 21-D-2
	15	Uehasu Chugakko	Kamiuekionmachi2152-2	— 21-D-2
	16	Yotsubagakuen Chutokyoikugakko	Kamiuekionmachi1702-1	— 20-C-2
	17	Uehasudaini Shogakko	Shimouekicho1203	— 21-D-3
	18	Bunkakaikan	Showacho3918	— 21-D-2
	19	Kasurinosato	Showacho1712-2	— 20-C-2
	20	Uehasu Shogakko	Kamiuekionmachi2763	— 21-D-2
	21	Kyoikukenkyujo	Kashimacho581-1	— 20-C-2
	22	Daiichi Chugakko	Moromachi1chome24-1	— 19-F-4
Moro area	23	Isesaki Kotogakko	MinamiSengicho5239-1	— 27-D-2
	24	Moro Shogakko	Moromachi2chome2169-1	— 26-C-1
	25	Moro Kominkan	Mimorocho3032-7	○ 26-C-2
	26	Hirose Shogakko	Shineicho4074-1	— 25-F-1
	27	Hirose Syogalgakusyukan	Hirosecho4080-5	— 25-F-1
	28	Sogokyoikusenta, Miraikyoso Chugakko	Imaizumicho1chome233-2	— 20-C-4
	29	Jidosenta	Kasukawacho1609	— 21-D-4
	30	Rinpokan	Sannocho1422-1	— 26-C-2
	31	Misato Kominkan	Hashiemachi1029	○ 14-C-4
	32	Misato Shogakko	Hashiemachi1620	— 14-C-4
Misato Area	33	Daisan Chugakko	Hashiemachi1903-1	— 14-C-4
	34	Isesakishogyo Kotogakko	Hashiemachi1116	— 14-B-4
	35	Seishonenikuseisenta	Hashiemachi2237-6	— 14-C-4
Miyago Area	36	Miyago Chugakko	TanakaJimamachi1065	— 18-C-3
	37	Miyago Yochien	TanakaJimamachi1486-8	— 18-C-3
	38	Miyago Kominkan	TanakaJimamachi1102	○ 18-C-3
	39	Miyago Shogakko	TanakaJimamachi1475-4	— 18-C-3
	40	Miyagodaini Shogakko	Tsunatorimachi3069-1	○ 19-D-3
Nawa Area	41	Seibu Koen *1	Tsunatorihonmachi1	— 19-D-2
	42	Nawa Kominkan	Horiguchimachi492	○ 25-E-2
	43	Nawa Shogakko	Horiguchimachi502-1	— 25-E-3
	44	Nawa Yochien	Horiguchimachi260	— 25-E-3
	45	Daini Chugakko	Horiguchimachi237-1	— 25-E-3
	46	Jobu Daigaku	Toyazukamachi634-1	— 25-D-4
	47	Isesakishiminmori Koen *1	Sannocho2663	— 25-F-2
	48	Tokyofukushi Daigaku	Sannocho2020-1	— 25-F-3
	49	Seisorisaikurusenta21	Shibamachi954	— 24-C-2
	50	Bando Shogakko	Yogecho422	— 25-E-4
Toyoke Area	51	Daiyon Chugakko	Gedojicho26	— 26-C-4
	52	Hottoru-mu, Nanbukyoshitsu	Gedojicho163-1	— 26-C-4
	53	Toyoke Kominkan	Mamizukamachi1297-1	○ 27-D-4
	54	Toyoke Shogakko	Mamizukamachi1130	— 27-D-4
	55	Shiminpuraza	Tomizukacho220-13	○ 25-E-4
	56	Kodomonomori Koen Isesaki	Mamizukamachi1808-1	— 27-D-4
Akabori Area	57	Akabori Kominkan	Nishikubocho2chome81	— 12-C-4
	58	Kyuakaborihokenfukushisenta	Nishikubocho2chome123-1	○ 12-C-4
	59	Akabori Jidokan	Nishikubocho2chome105	— 12-C-4
	60	Akabori Yochien	Nishikubocho2chome100	— 12-C-4

Designated Emergency Evacuation Site・Designated Evacuation Shelters				
Area	Number	Facility Name	Address	Disaster Warehouse Coordinated Map
Akabori Area	61	Akabori Shogakko	Nishikubocho1chome72	○ 12-C-4
	62	Akaboriminami Shogakko	Horishitacho264-1	○ 15-E-2
	63	Akabori Chugakko	Nishikubocho2chome329-1	○ 16-B-1
	64	Akaborihigashi Shogakko	Kobayashicho1chome260-2	○ 13-D-3
	65	Akaboriminami Jidokan	Horishitacho276	— 15-E-2
	66	Akaboriasahi Jidokan	Kobayashicho1chome1348-1	— 13-E-3
	67	Akabori Taiikukan	Nishikubocho2chome81	— 12-C-4
Azuma Area	68	Azuma Shogakko	Azumacho2770	— 16-C-4
	69	Azuma Chugakko	Azumacho2707-2	○ 16-C-4
	70	Azumakita Shogakko	Kunisadamachi2chome1627	○ 16-C-2
	71	Azuma Kominkan	Tabeicho3chome2090	— 17-D-4
	72	Azuma Taiikukan	Tabeicho3chome2090	— 17-D-4
	73	Azumaminami Shogakko	Mimurocho4290	○ 21-F-2
	74	Azumasutajamu	Tabeicho3chome1908	— 17-D-3
	75	Miyasenta	HigashiObokatacho3243-2	○ 23-D-2
	76	Azuma Yochien	Azumacho2672-1	— 16-C-4
	77	Seishiniryosenta	Kunisadamachi2chome2374	— 16-B-2
Sakai Area	78	Sakai Shogakko	Sakai515	○ 33-D-1
	79	Isesaki Kototokubetsushienagako	Sakai492	— 33-D-1
	80	Sakaininami Chugakko	Sakai188	— 33-D-2
	81	Sakai Taiikukan	Sakai609-1	— 28-C-4
	82	Sakai Budokan	Sakaihagiwara1750-2	— 28-C-4
	83	Sakai Kominkan	Sakai598-1	— 28-C-4
	84	Sakaionunome Shogakko	Sakaishimofuchina2020	○ 27-F-2
	85	Sakaionunome Kominkan	Sakaishimofuchina2023-1	— 27-F-2
	86	Sakaikita Chugakko	Sakaishimofuchina2011-1	— 27-F-2
	87	Sakainishi Chugakko	Sakaishimotakeshi872-2	— 27-F-4
	88	Sakaigoshi Shogakko	Sakaishimotakeshi831	○ 27-F-4
	89	Sakaigoshi Kominkan	Sakaishimotakeshi862-3	— 27-F-4
	90	Kyusakaishima Shogakko	Sakaishimamura1968-40	○ 32-C-4
	91	Sakaishimamura Kominkan	Sakaishimamura2720	— 33-D-4
	92	Sakai Higashi Shogakko	Sakaiyoneoka 253-2	○ 33-D-1
	93	Sakaishigashi Kominkan	Sakaiyoneoka764-1	— 33-D-2
	94	Sakaishakaifukushisenta	Sakaionaduka296	— 29-E-4
	95	SakaishangyoshinkoKaikan	Sakaishinei13-6	— 29-E-4
	96	Sakaishinei Jidosenta	Sakaishinei12-4	— 29-E-4
	97	Sakaishogobunkasenta	Sakaikijima818	— 28-C-3

福祉 Welfare Evacuation Shelters				
Number	Facility Name	Address	Disaster Warehouse	Coordinated Map
F1	Fukushipuraza	Chuocho26-22	○	19-F-3
F2	Kyukenkoukanrisenta	Otamachi1178	○	19-E-3
F3	Shiminpuraza	Tomizukacho220-13	○	25-E-4
F4	Kyuakaborihokenfukushisenta	Nishikubocho2chome123-1	○	12-C-4
F5	Miyasenta *2	Higashiobokatacho3243-2	○	23-D-2
F6	Sakaishikifukushisenta *2	Sakaikamitakeshi972-1	○	27-E-4

Evacuation facilities that allow pets to be brought into the living area				
Number	Facility Name	Address	Disaster Warehouse	Coordinated Map
P1	Dainishimin Taiikukan *3	Inuicho75-5	—	19-F-1

- *1--Designated emergency evacuation site, not a designated shelter.
 *2--Open only during earthquakes.
 *3--Open only during times of flooding.

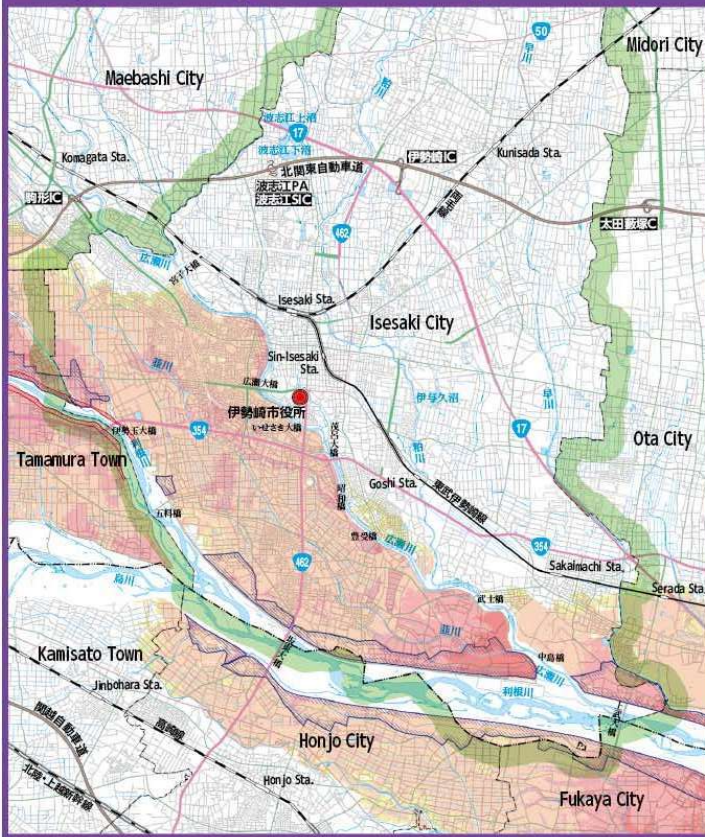
Scan here for "Designated emergency evacuation site, Designated shelters, Welfare evacuation shelters" HP.
https://www.city.isesaki.lg.jp/bousai_info/hinanjo/hinan/index.html



Flooding Potential Area Map by River

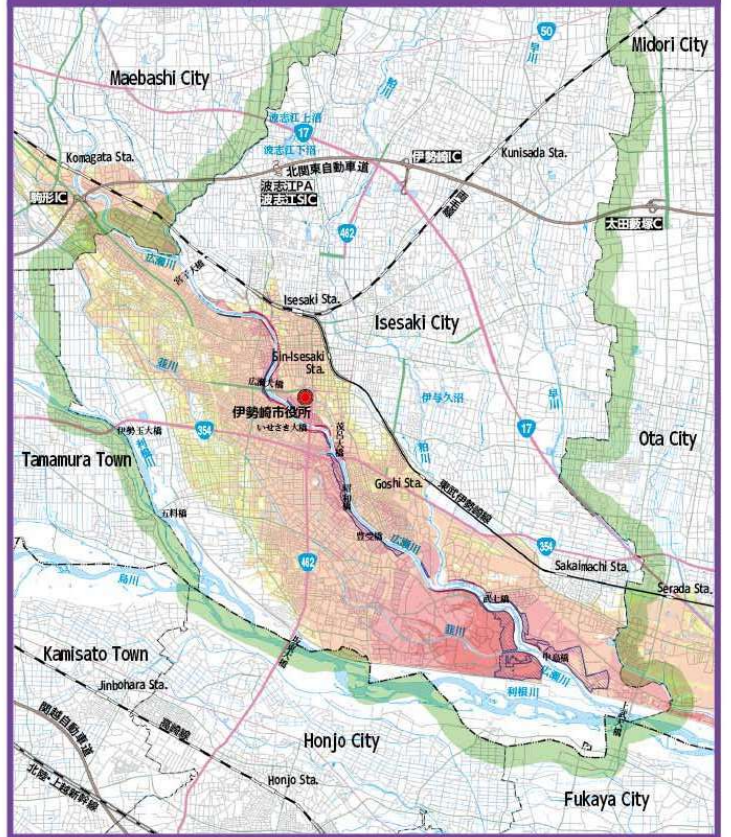
Tonegawa Flooding Potential Area Map

0 2 4km
1 : 130,000



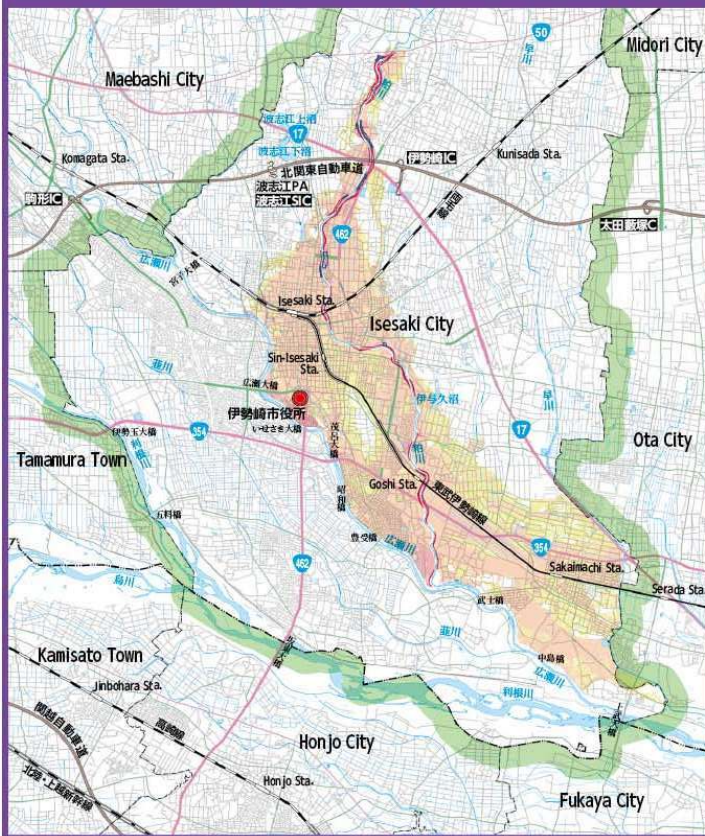
Hirosegawa Flooding Potential Area Map

0 2 4km
1 : 130,000



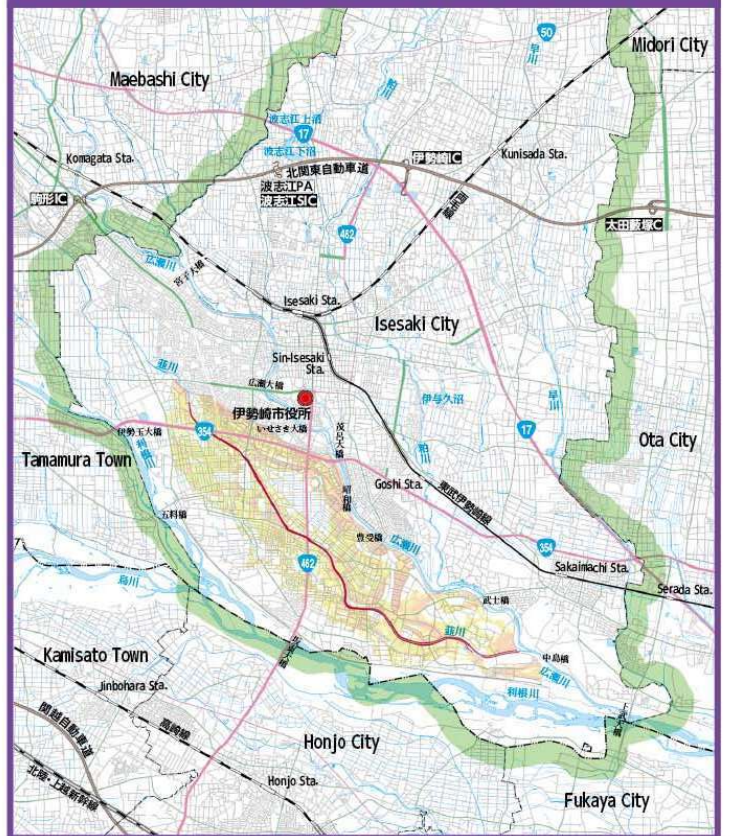
Kasukawa Flooding Potential Area Map

0 2 4km
1 : 130,000



Niragawa Flooding Potential Area Map

0 2 4km
1 : 130,000



- This page lists only designated sections of flood forecast rivers and rivers whose water levels are known by the ministry of land, Infrastructure, Transport and Tourism and Gunma Prefecture.
- For Gunma Prefecture-managed rivers other than the designated sections, please refer to the "Gunma Prefecture Flood Risk Potential Map".

Scan here for the Gunma Prefecture
"Gunma Prefecture Flood Risk
Potential Map" HP

